



[Go to Product page](#)

Datasheet for ABIN1309029

## Keratin 75 Protein (KRT75) (AA 141-240) (GST tag)

### 1 Image

#### Overview

Quantity:	10 µg
Target:	Keratin 75 (KRT75)
Protein Characteristics:	AA 141-240
Origin:	Human
Source:	Wheat germ
Protein Type:	Recombinant
Purification tag / Conjugate:	This Keratin 75 protein is labelled with GST tag.
Application:	ELISA, Western Blotting (WB), Affinity Purification (AP), Antibody Array (AA)

#### Product Details

Purpose:	K6HF (Human) Recombinant Protein (Q01)
Sequence:	TIQRVRAEER EQIKTLNKNF ASFIDKVRFL EQQNKVLETK WALLQEQGSR TVRQNLEPLF DSYTSSELRRQ LESITTERGR LEAELRNMQD VVEDFKVRYE
Characteristics:	Human K6HF partial ORF ( NP_004684, 141 a.a. - 240 a.a.) recombinant protein with GST-tag at N-terminal.
Purification:	in vitro wheat germ expression system

#### Target Details

Target:	Keratin 75 (KRT75)
Alternative Name:	KRT75 ( <a href="#">KRT75 Products</a> )

## Target Details

Background: Full Gene Name: keratin 75  
Synonyms: K6HF,KB18,PFB

Gene ID: 9119

NCBI Accession: [NM\\_004693](#)

## Application Details

Application Notes: Optimal working dilution should be determined by the investigator.

Comment: Preparation method: in vitro, wheat germ expression system  
Product Quality tested by: 12.5% SDS-PAGE Stained with Coomassie Blue.

Restrictions: For Research Use only

## Handling

Buffer: 50 mM Tris-HCl, 10 mM reduced Glutathione, pH =8.0 in the elution buffer.

Handling Advice: Aliquot to avoid repeated freezing and thawing.

Storage: -80 °C

Storage Comment: Best use within three months from the date of receipt of this protein.

## Images

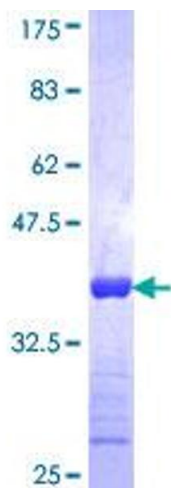


Image 1.