

Datasheet for ABIN1309047

KRTAP1-5 Protein (AA 1-174) (GST tag)



[Go to Product page](#)

1 Image

Overview

Quantity:	10 µg
Target:	KRTAP1-5
Protein Characteristics:	AA 1-174
Origin:	Human
Source:	Wheat germ
Protein Type:	Recombinant
Purification tag / Conjugate:	This KRTAP1-5 protein is labelled with GST tag.
Application:	ELISA, Western Blotting (WB), Affinity Purification (AP), Antibody Array (AA)

Product Details

Purpose:	KRTAP1-5 (Human) Recombinant Protein (P01)
Sequence:	MTCCQTSFCG YPSFSISGTC GSSCCQPSCC ETSCCQPRSC QTSFCGFPSF STSGTCSSSC CQPSCCETSC CQPSCCETSC CQPSCCQISS CGTGCGIGGG ISYGQEGSSG AVSTRIRWCR PDSRVEGTYL PPCCVWVSTP PSCCQLHHAQ ASCCRPSYCG QSCCRPVCCC EPTC
Characteristics:	Human KRTAP1-5 full-length ORF (NP_114163.1, 1 a.a. - 174 a.a.) recombinant protein with GST-tag at N-terminal.
Purification:	in vitro wheat germ expression system

Target Details

Target:	KRTAP1-5
Alternative Name:	KRTAP1-5 (KRTAP1-5 Products)

Target Details

Background:	Full Gene Name: keratin associated protein 1-5 Synonyms: KAP1.5,KRTAP1.5,MGC126604
Gene ID:	83895
NCBI Accession:	NM_031957

Application Details

Application Notes:	Optimal working dilution should be determined by the investigator.
Comment:	Preparation method: in vitro, wheat germ expression system Product Quality tested by: 12.5% SDS-PAGE Stained with Coomassie Blue.
Restrictions:	For Research Use only

Handling

Buffer:	50 mM Tris-HCl, 10 mM reduced Glutathione, pH =8.0 in the elution buffer.
Handling Advice:	Aliquot to avoid repeated freezing and thawing.
Storage:	-80 °C
Storage Comment:	Best use within three months from the date of receipt of this protein.

Images

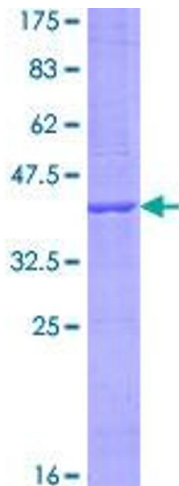


Image 1.