

Datasheet for ABIN1309049

KRTAP10-2/KAP10.2 Protein (AA 1-255) (GST tag)[Go to Product page](#)**1** Image

Overview

Quantity:	25 µg
Target:	KRTAP10-2/KAP10.2 (KRTAP10-2)
Protein Characteristics:	AA 1-255
Origin:	Human
Source:	Wheat germ
Protein Type:	Recombinant
Purification tag / Conjugate:	This KRTAP10-2/KAP10.2 protein is labelled with GST tag.
Application:	ELISA, Western Blotting (WB), Affinity Purification (AP), Antibody Array (AA)

Product Details

Purpose:	KRTAP10-2 (Human) Recombinant Protein (P01)
Sequence:	MAASTMSICS SACTNSWQVD DCPESCCELP CGTPSCCAPA PCLTLVCTPV SCVSSPCCQA ACEPSACQSG CTSSCTPSCC QQSSCQPACC TSSPCQQACC VPVCKPVCC VPVCCGASSC CQQSSCQPAC CASSCQQSC RVPVCKAVC CVPTCSESSS SCCQSSCQP ACCTSSPCQQ SCCVSVCKP VCCKSICCV VCSGASSPCC QQSSCQPACC TSSCCRPSSS VLLCRPVCS RPASCSFSSG QKSSC
Characteristics:	Human KRTAP10-2 full-length ORF (AAI46566.1, 1 a.a. - 255 a.a.) recombinant protein with GST-tag at N-terminal.
Purification:	in vitro wheat germ expression system

Target Details

Target:	KRTAP10-2/KAP10.2 (KRTAP10-2)
Alternative Name:	KRTAP10-2 (KRTAP10-2 Products)
Background:	Full Gene Name: keratin associated protein 10-2 Synonyms: KAP10.2,KAP18-2,KAP18.2,KRTAP10.2,KRTAP18-2,KRTAP18.2
Gene ID:	386679

Application Details

Application Notes:	Optimal working dilution should be determined by the investigator.
Comment:	Preparation method: in vitro, wheat germ expression system Product Quality tested by: 12.5% SDS-PAGE Stained with Coomassie Blue.
Restrictions:	For Research Use only

Handling

Buffer:	50 mM Tris-HCl, 10 mM reduced Glutathione, pH =8.0 in the elution buffer.
Handling Advice:	Aliquot to avoid repeated freezing and thawing.
Storage:	-80 °C
Storage Comment:	Best use within three months from the date of receipt of this protein.

Images

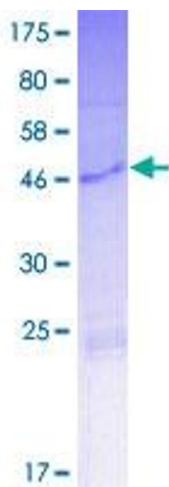


Image 1.