

Datasheet for ABIN1309053

KRTAP13-1/KAP13.1 Protein (GST tag)[Go to Product page](#)**1** Image

Overview

Quantity:	10 µg
Target:	KRTAP13-1/KAP13.1 (KRTAP13-1)
Origin:	Human
Source:	Wheat germ
Protein Type:	Recombinant
Purification tag / Conjugate:	This KRTAP13-1/KAP13.1 protein is labelled with GST tag.
Application:	ELISA, Western Blotting (WB), Affinity Purification (AP), Antibody Array (AA)

Product Details

Purpose:	KRTAP13-1 (Human) Recombinant Protein (P01)
Sequence:	MWHANSESSQ CNSAELTSPI NMSYNCCSGN FSSRSCGGYL HYPASSCGFS YPSNQVYSTD LCSPSTCQLG SSLYRGCQQT CWEPTSCQTS YVESSPCQTS CYRPRTSLLC SPCQTTYSGS LGFSSSSCRS LGYGSRSYCS VCGGSSGFERS LYGVCVFGRP TYLASRSCQS SCYRPTCGSG FYY
Characteristics:	Human KRTAP13-1 full-length ORF (AAI13539.1, 1 a.a. - 193 a.a.) recombinant protein with GST-tag at N-terminal.
Purification:	in vitro wheat germ expression system

Target Details

Target:	KRTAP13-1/KAP13.1 (KRTAP13-1)
Alternative Name:	KRTAP13-1 (KRTAP13-1 Products)

Target Details

Background: Gene: keratin associated protein 13-1
Synonyms: KAP13.1, KRTAP13.1

Gene ID: 140258

Application Details

Application Notes: Optimal working dilution should be determined by the investigator.

Restrictions: For Research Use only

Handling

Buffer: 50 mM Tris-HCl, 10 mM reduced Glutathione, pH =8.0 in the elution buffer.

Handling Advice: Aliquot to avoid repeated freezing and thawing.

Storage: -80 °C

Storage Comment: Best use within three months from the date of receipt of this protein.

Images

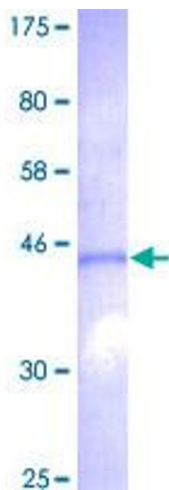


Image 1.