



[Go to Product page](#)

Datasheet for ABIN1309067

KRTAP4-4 Protein (AA 1-166) (GST tag)

1 Image

Overview

Quantity:	10 µg
Target:	KRTAP4-4
Protein Characteristics:	AA 1-166
Origin:	Human
Source:	Wheat germ
Protein Type:	Recombinant
Purification tag / Conjugate:	This KRTAP4-4 protein is labelled with GST tag.
Application:	ELISA, Western Blotting (WB), Affinity Purification (AP), Antibody Array (AA)

Product Details

Purpose:	KRTAP4-4 (Human) Recombinant Protein (P01)
Sequence:	MVNSCCGSVC SDQGCLENC CRPSYCQTTT CRTTCCRPSC CVSSCCRPQC CQTTCCRTTC CHPSCCVSSC CRPQCCQSV CQPTCCRPQC CQTTCCRTTC CRPSCCRPQC CQSVCCQPTC CCPSYCVSSC CRPQCCQTTT CRTTCCRPSC CVSRCYRPHC GQSLCC
Characteristics:	Human KRTAP4-4 full-length ORF (NP_115913.1, 1 a.a. - 166 a.a.) recombinant protein with GST-tag at N-terminal.
Purification:	in vitro wheat germ expression system

Target Details

Target:	KRTAP4-4
Alternative Name:	KRTAP4-4 (KRTAP4-4 Products)

Target Details

Background:	Full Gene Name: keratin associated protein 4-4 Synonyms: KAP4.13,KAP4.4,KRTAP4-13,KRTAP4.13,KRTAP4.4
Gene ID:	84616
NCBI Accession:	NM_032524

Application Details

Application Notes:	Optimal working dilution should be determined by the investigator.
Comment:	Preparation method: in vitro, wheat germ expression system Product Quality tested by: 12.5% SDS-PAGE Stained with Coomassie Blue.
Restrictions:	For Research Use only

Handling

Buffer:	50 mM Tris-HCl, 10 mM reduced Glutathione, pH =8.0 in the elution buffer.
Handling Advice:	Aliquot to avoid repeated freezing and thawing.
Storage:	-80 °C
Storage Comment:	Best use within three months from the date of receipt of this protein.

Images

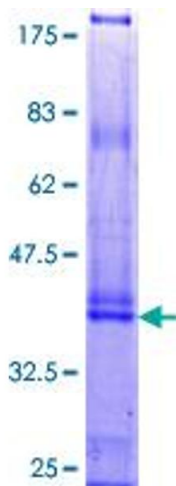


Image 1.