



[Go to Product page](#)

Datasheet for ABIN1309072

KRTAP5-7 Protein (AA 1-165) (GST tag)

1 Image

Overview

Quantity:	25 µg
Target:	KRTAP5-7
Protein Characteristics:	AA 1-165
Origin:	Human
Source:	Wheat germ
Protein Type:	Recombinant
Purification tag / Conjugate:	This KRTAP5-7 protein is labelled with GST tag.
Application:	ELISA, Western Blotting (WB), Affinity Purification (AP), Antibody Array (AA)

Product Details

Purpose:	KRTAP5-7 (Human) Recombinant Protein (P01)
Sequence:	MGCCGCSEGC GSGCGGCGSG CGGCGSGCGG CGSSCCVPVC CCKPVCCCVP ACSCSSCGSC GGSKGGCGSC GGSKGGCGSC GGSKGGCGSC GCSQCSCYKP CCCSSGCGSS CCQSSCCKPC CCQSSCCKPC CCSSGCGSS CQSSCCNPCC SQSSCCVPVC CQCKI
Characteristics:	Human KRTAP5-7 full-length ORF (AAI48791.1, 1 a.a. - 165 a.a.) recombinant protein with GST-tag at N-terminal.
Purification:	in vitro wheat germ expression system

Target Details

Target:	KRTAP5-7
Alternative Name:	KRTAP5-7 (KRTAP5-7 Products)

Target Details

Background: Full Gene Name: keratin associated protein 5-7
Synonyms: KRTAP5-3,KRTAP5.7

Gene ID: 440050

Application Details

Application Notes: Optimal working dilution should be determined by the investigator.

Comment: Preparation method: in vitro, wheat germ expression system
Product Quality tested by: 12.5% SDS-PAGE Stained with Coomassie Blue.

Restrictions: For Research Use only

Handling

Buffer: 50 mM Tris-HCl, 10 mM reduced Glutathione, pH =8.0 in the elution buffer.

Handling Advice: Aliquot to avoid repeated freezing and thawing.

Storage: -80 °C

Storage Comment: Best use within three months from the date of receipt of this protein.

Images

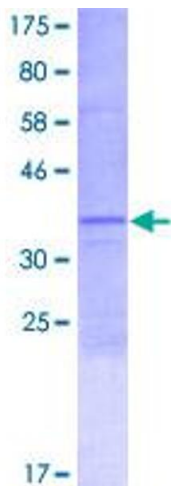


Image 1.