

Datasheet for ABIN1309092

L1CAM Protein (AA 23-132) (GST tag)



[Go to Product page](#)

1 Image

Overview

Quantity:	10 µg
Target:	L1CAM
Protein Characteristics:	AA 23-132
Origin:	Human
Source:	Wheat germ
Protein Type:	Recombinant
Purification tag / Conjugate:	This L1CAM protein is labelled with GST tag.
Application:	Western Blotting (WB), ELISA, Affinity Purification (AP), Antibody Array (AA)

Product Details

Purpose:	L1CAM (Human) Recombinant Protein (Q01)
Sequence:	PEEYEGHHVM EPPVITEQSP RRLVVFPTDD ISLKCEASGK PEVQFRWTRD GVHFKPKEEL GVTVYQSPHS GSFTITGNNS NFAQRFQGIY RCFASNKLGT AMSHEIRLMA
Characteristics:	Human L1CAM partial ORF (NP_000416, 23 a.a. - 132 a.a.) recombinant protein with GST-tag at N-terminal.
Purification:	in vitro wheat germ expression system

Target Details

Target:	L1CAM
Alternative Name:	L1CAM (L1CAM Products)

Target Details

Background:	Full Gene Name: L1 cell adhesion molecule Synonyms: CAML1,CD171,HSAS,HSAS1,MASA,MIC5,N-CAML1,S10,SPG1
Gene ID:	3897
NCBI Accession:	NM_000425
Pathways:	Synaptic Membrane

Application Details

Application Notes:	Optimal working dilution should be determined by the investigator.
Comment:	Preparation method: in vitro, wheat germ expression system Product Quality tested by: 12.5% SDS-PAGE Stained with Coomassie Blue.
Restrictions:	For Research Use only

Handling

Buffer:	50 mM Tris-HCl, 10 mM reduced Glutathione, pH =8.0 in the elution buffer.
Handling Advice:	Aliquot to avoid repeated freezing and thawing.
Storage:	-80 °C
Storage Comment:	Best use within three months from the date of receipt of this protein.

Images

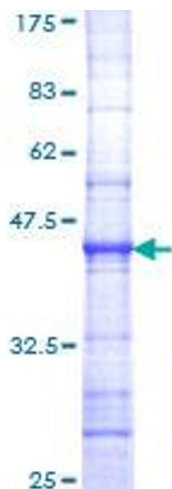


Image 1.