



[Go to Product page](#)

Datasheet for ABIN1309104

LACE1 Protein (AA 1-481) (GST tag)

1 Image

Overview

Quantity:	10 µg
Target:	LACE1
Protein Characteristics:	AA 1-481
Origin:	Human
Source:	Wheat germ
Protein Type:	Recombinant
Purification tag / Conjugate:	This LACE1 protein is labelled with GST tag.
Application:	ELISA, Western Blotting (WB), Affinity Purification (AP), Antibody Array (AA)

Product Details

Purpose:	LACE1 (Human) Recombinant Protein (P01)
Sequence:	MAASWSLLVT LRPLAQSP LR GRCVGC GAWA AALAPLATAP GKPFWKAYTV QTSESMTP TA TSETYLKALA VCHGPLDHYD FLIKAHELKD DEHQRRVIQC LQKLHEDLKG YNIEA EGLFS KLF SRSKPPR GLYVYGDVGT GKT MVMDMFY AYVEMKRKKR VHFHGFMLDV HKRIHRLKQS LPKRKPGFMA KSYDPIAPIA EEISEEACLL CFDEFQVTDI ADAMILKQLF ENLFKNGVVV VATSNRPPED LYKNGLQRAN FVPFIAVLKE YCNTVQLDSG IDYRKRELP A AGKLYYLTSE ADVEAVMDKL FDELAQKQND LTRPRILKVQ GRELRLNKAC GTVADCTFEE LCERPLGASD YLELSKNFDT IFLRNIPQFT LANRTQGRFF ITLIDNFYDL KVRIICSAST PISSLFLHQH HDSELEQSRI LMDDLGLSQD SAEGLSMFTG EEEIFAFQRT ISRLTEMQTE QYWNEGDR TK K
Characteristics:	Human LACE1 full-length ORF (NP_660358.2, 1 a.a. - 481 a.a.) recombinant protein with GST-tag at N-terminal.

Product Details

Purification: in vitro wheat germ expression system

Target Details

Target: LACE1

Alternative Name: LACE1 ([LACE1 Products](#))

Background: Full Gene Name: lactation elevated 1
Synonyms: AFG1

Gene ID: 246269

NCBI Accession: [NM_145315](#)

Application Details

Application Notes: Optimal working dilution should be determined by the investigator.

Comment: Preparation method: in vitro, wheat germ expression system
Product Quality tested by: 12.5% SDS-PAGE Stained with Coomassie Blue.

Restrictions: For Research Use only

Handling

Buffer: 50 mM Tris-HCl, 10 mM reduced Glutathione, pH =8.0 in the elution buffer.

Handling Advice: Aliquot to avoid repeated freezing and thawing.

Storage: -80 °C

Storage Comment: Best use within three months from the date of receipt of this protein.

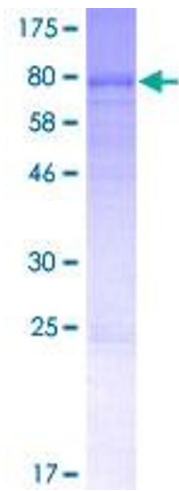


Image 1.