



[Go to Product page](#)

Datasheet for ABIN1309130

Laminin gamma 1 Protein (AA 1-38) (GST tag)

1 Image

Overview

Quantity:	10 µg
Target:	Laminin gamma 1 (LAMC1)
Protein Characteristics:	AA 1-38
Origin:	Human
Source:	Wheat germ
Protein Type:	Recombinant
Purification tag / Conjugate:	This Laminin gamma 1 protein is labelled with GST tag.
Application:	Western Blotting (WB), ELISA, Affinity Purification (AP), Antibody Array (AA)

Product Details

Purpose:	LAMC1 (Human) Recombinant Protein (P01)
Sequence:	MNKRRTSHRI WKNKLPEYMR RPKGPVTKLW RSMPAWLS
Characteristics:	Human LAMC1 full-length ORF (AAH15586, 1 a.a. - 38 a.a.) recombinant protein with GST-tag at N-terminal.
Purification:	in vitro wheat germ expression system

Target Details

Target:	Laminin gamma 1 (LAMC1)
Alternative Name:	LAMC1 (LAMC1 Products)
Background:	Full Gene Name: laminin, gamma 1 (formerly LAMB2)

Target Details

Synonyms: LAMB2,MGC87297

Gene ID: 3915

Application Details

Application Notes: Optimal working dilution should be determined by the investigator.

Comment: Preparation method: in vitro, wheat germ expression system
Product Quality tested by: 12.5% SDS-PAGE Stained with Coomassie Blue.

Restrictions: For Research Use only

Handling

Buffer: 50 mM Tris-HCl, 10 mM reduced Glutathione, pH =8.0 in the elution buffer.

Handling Advice: Aliquot to avoid repeated freezing and thawing.

Storage: -80 °C

Storage Comment: Best use within three months from the date of receipt of this protein.

Images

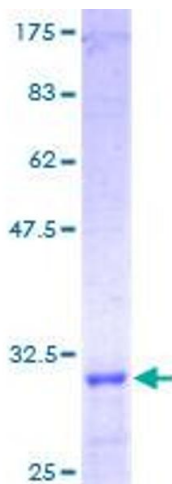


Image 1.