



[Go to Product page](#)

Datasheet for ABIN1309139

LANCL2 Protein (AA 1-450) (GST tag)

1 Image

Overview

Quantity:	10 µg
Target:	LANCL2
Protein Characteristics:	AA 1-450
Origin:	Human
Source:	Wheat germ
Protein Type:	Recombinant
Purification tag / Conjugate:	This LANCL2 protein is labelled with GST tag.
Application:	ELISA, Western Blotting (WB), Affinity Purification (AP), Antibody Array (AA)

Product Details

Purpose:	LANCL2 (Human) Recombinant Protein (P01)
Sequence:	MGETMSKRLK LHLGGEAEME ERAFVNPFDP YEAAAGALLA SGAAEETGCV RPPATTDEPG LPFHQDGKII HNFIRRIQTK IKDLLQMEE GLKTADPHDC SAYTGWTGIA LLYLQLYRVT CDQTYLLRSL DYVKRTLRLN NGRRVTFLCG DAGPLAVGAV IYHKLRSDCE SQECVTKLLQ LQRSVVCQES DLPDELLYGR AGYLYALLYL NTEIGPGTVC ESAIKEVVNA IIESGKTLRSR EERKTERCPL LYQWHRKQYV GAAHGMAGIY YMLMQPAAKV DQETLTEMVK PSIDYVRHKK FRSGNYPSSL SNETDRLVHW CHGAPGVIHM LMQAYKVFKE EKYLKEAMEC SDVIWQRGLL RKGYGICHGT AGNGYSFSL YRLTQDKKYL YRACKFAEWC LDYGAHGCR I PDRPYSLFEG MAGAIHFLSD VLGPESTRFP AFELDSSKRD
Characteristics:	Human LANCL2 full-length ORF (NP_061167.1, 1 a.a. - 450 a.a.) recombinant protein with GST-tag at N-terminal.

Product Details

Purification: in vitro wheat germ expression system

Target Details

Target: LANCL2

Alternative Name: LANCL2 ([LANCL2 Products](#))

Background: Full Gene Name: LanC lantibiotic synthetase component C-like 2 (bacterial)
Synonyms: GPR69B,MGC87139,TASP

Gene ID: 55915

NCBI Accession: [NM_018697](#)

Application Details

Application Notes: Optimal working dilution should be determined by the investigator.

Comment: Preparation method: in vitro, wheat germ expression system
Product Quality tested by: 12.5% SDS-PAGE Stained with Coomassie Blue.

Restrictions: For Research Use only

Handling

Buffer: 50 mM Tris-HCl, 10 mM reduced Glutathione, pH =8.0 in the elution buffer.

Handling Advice: Aliquot to avoid repeated freezing and thawing.

Storage: -80 °C

Storage Comment: Best use within three months from the date of receipt of this protein.

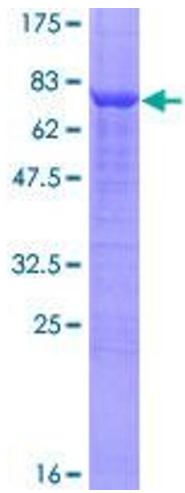


Image 1.