



Datasheet for ABIN1309161

## LARS2 Protein (AA 1-903) (GST tag)



[Go to Product page](#)

### 1 Image

#### Overview

Quantity:	10 µg
Target:	LARS2
Protein Characteristics:	AA 1-903
Origin:	Human
Source:	Wheat germ
Protein Type:	Recombinant
Purification tag / Conjugate:	This LARS2 protein is labelled with GST tag.
Application:	Western Blotting (WB), Affinity Purification (AP), Antibody Array (AA), ELISA

#### Product Details

Purpose:	LARS2 (Human) Recombinant Protein (P01)
Sequence:	MASVWQRLGF YASLLKRQLN GGPDVIKWER RVIPGCTRSI YSATGKWTKE YTLQTRKDVE KWWHQRIKEQ ASKISEADKS KPKFYVLSMF PYPGKLMHG HVRVYTISDT IARFQKMRGM QVINPMGWDA FGLPAENAAV ERNLHPQSWT QSNIKHMRKQ LDRLGLCFSW DREITTCPLD YYKWTQYLFY KLYEAGLAYQ KEALVNWDVP DQTVLANEQV DEHGCSWRSG AKVEQKYLRQ WFIKTTAYAK AMQDALADLP EWYGIKGMQA HWIGDCVGCH LDFTLKVHGQ ATGEKLTAYT ATPEAIYGTS HVAISPSHRL LHGHSSLKEA LRMALVPGKD CLTPVMAVNM LTQQEVPVVI LAKADLEGLS DSKIGIPSTS SEDTILAQTL GLAYSEVIET LPDENTERLSS SAEFTGMTRQ DAFLALTQKA RGKRVGGDVT SDKLKDWLIS RQRYWGTPIP IVHCPVCGPT PVPLEDLPVT LPNIASFTGK GGPPLAMASE WVNCSCPRCK GAAKRETDTM DTFVDSAWYY FRYTDPHNPH SPFNTAVADY WMPVDLYIGG KEHAVMHLFY ARFFSHFCHD QKMVKHREPF HKLLAQGLIK GQTFRLPSGQ YLQREEVDLT GSPVHAKTK EKLEVTWEKM SKSKHNGVDP EEVVEQYGID

## Product Details

---

TIRLYILFAA PPEKDILWDV KTDALPGVLR WQQLRWLTT RFIEARASGK SPQPQLLSNK  
EKAEARKLWE YKNSVISQVT THFTEDFSLN SAISQLMGLS NALSQASQSV ILHSPEFEDA  
LCALMVMAAP LAPHVTSEIW AGLALVPRKL CAHYTWDASV LLQAWPAVDP EFLQQPEVVQ  
MAVLINNKAC GKIPVPQVA RDQDKVHEFV LQSELGVRLL QGRSIKKSFL SPRTALINFL VQD

Characteristics: Human LARS2 full-length ORF ( NP\_056155.1, 1 a.a. - 903 a.a.) recombinant protein with GST-tag at N-terminal.

Purification: in vitro wheat germ expression system

## Target Details

---

Target: LARS2

Alternative Name: LARS2 ([LARS2 Products](#))

Background: Full Gene Name: leucyl-tRNA synthetase 2, mitochondrial  
Synonyms: KIAA0028,LEURS,MGC26121

Gene ID: 23395

NCBI Accession: [NM\\_015340](#)

## Application Details

---

Application Notes: Optimal working dilution should be determined by the investigator.

Comment: Preparation method: in vitro, wheat germ expression system  
Product Quality tested by: 12.5% SDS-PAGE Stained with Coomassie Blue.

Restrictions: For Research Use only

## Handling

---

Buffer: 50 mM Tris-HCl, 10 mM reduced Glutathione, pH =8.0 in the elution buffer.

Handling Advice: Aliquot to avoid repeated freezing and thawing.

Storage: -80 °C

Storage Comment: Best use within three months from the date of receipt of this protein.

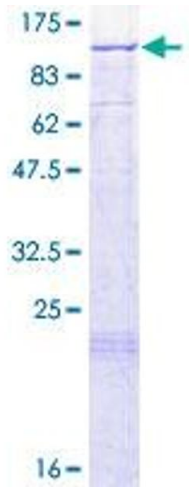


Image 1.