

Datasheet for ABIN1309163

LARS2 Protein (AA 806-903) (GST tag)



[Go to Product page](#)

1 Image

Overview

Quantity:	10 µg
Target:	LARS2
Protein Characteristics:	AA 806-903
Origin:	Human
Source:	Wheat germ
Protein Type:	Recombinant
Purification tag / Conjugate:	This LARS2 protein is labelled with GST tag.
Application:	Western Blotting (WB), Affinity Purification (AP), Antibody Array (AA), ELISA

Product Details

Purpose:	LARS2 (Human) Recombinant Protein (Q01)
Sequence:	VPRKLCAYHT WDASVLLQAW PAVDPEFLQQ PEVVQMAVLI NNKACGKIPV PQQVARDQDK VHEFVLQSEL GVRLLQGRSI KKSFLSPRTA LINFLVQD
Characteristics:	Human LARS2 partial ORF (NP_056155, 806 a.a. - 903 a.a.) recombinant protein with GST-tag at N-terminal.
Purification:	in vitro wheat germ expression system

Target Details

Target:	LARS2
Alternative Name:	LARS2 (LARS2 Products)

Target Details

Background:	Full Gene Name: leucyl-tRNA synthetase 2, mitochondrial Synonyms: KIAA0028,LEURS,MGC26121
Gene ID:	23395
NCBI Accession:	NM_015340

Application Details

Application Notes:	Optimal working dilution should be determined by the investigator.
Comment:	Preparation method: in vitro, wheat germ expression system Product Quality tested by: 12.5% SDS-PAGE Stained with Coomassie Blue.
Restrictions:	For Research Use only

Handling

Buffer:	50 mM Tris-HCl, 10 mM reduced Glutathione, pH =8.0 in the elution buffer.
Handling Advice:	Aliquot to avoid repeated freezing and thawing.
Storage:	-80 °C
Storage Comment:	Best use within three months from the date of receipt of this protein.

Images

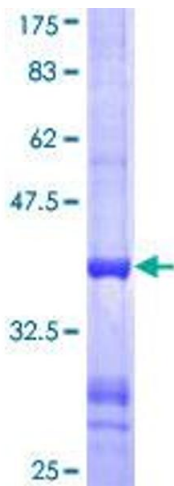


Image 1.