



[Go to Product page](#)

Datasheet for ABIN1309179

LASS5 Protein (AA 63-147) (GST tag)

1 Image

Overview

Quantity:	10 µg
Target:	LASS5
Protein Characteristics:	AA 63-147
Origin:	Human
Source:	Wheat germ
Protein Type:	Recombinant
Purification tag / Conjugate:	This LASS5 protein is labelled with GST tag.
Application:	ELISA, Western Blotting (WB), Affinity Purification (AP), Antibody Array (AA)

Product Details

Purpose:	LASS5 (Human) Recombinant Protein (Q01)
Sequence:	LFERFIAKPC ALRIGIEDSG PYQAQPNAIL EKVFIKITKY PDKKRLEGLS KQLDWNVRKI QCWFRHRRNQ DKPPTLTKFC ESMWR
Characteristics:	Human LASS5 partial ORF (NP_671723.1, 63 a.a. - 147 a.a.) recombinant protein with GST-tag at N-terminal.
Purification:	in vitro wheat germ expression system

Target Details

Target:	LASS5
Alternative Name:	LASS5 (LASS5 Products)

Target Details

Background:	Gene: LAG1 homolog, ceramide synthase 5 Synonyms: CerS5, FLJ25304, MGC45411, Trh4
Gene ID:	91012
NCBI Accession:	NM_147190

Application Details

Application Notes:	Optimal working dilution should be determined by the investigator.
Restrictions:	For Research Use only

Handling

Buffer:	50 mM Tris-HCl, 10 mM reduced Glutathione, pH =8.0 in the elution buffer.
Handling Advice:	Aliquot to avoid repeated freezing and thawing.
Storage:	-80 °C
Storage Comment:	Best use within three months from the date of receipt of this protein.

Images

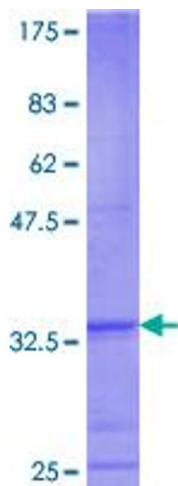


Image 1.