



[Go to Product page](#)

Datasheet for ABIN1309185

## LAT Protein (AA 1-233) (GST tag)

### 1 Image

#### Overview

Quantity:	10 µg
Target:	LAT
Protein Characteristics:	AA 1-233
Origin:	Human
Source:	Wheat germ
Protein Type:	Recombinant
Purification tag / Conjugate:	This LAT protein is labelled with GST tag.
Application:	Western Blotting (WB), ELISA, Affinity Purification (AP), Antibody Array (AA)

#### Product Details

Purpose:	LAT (Human) Recombinant Protein (P01)
Sequence:	MEEAILVPCV LGLLLLPILA MLMALCVHCH RLPGSYDSTS SDSLYPRGIQ FKRPHTVAPW PPAYPPVTSY PPLSQPDLLP IPRSPQLGG PHRTPSSRRD SDGANSVASV ENEEPACEDA DEDEDDYHNP GYLVVLPDST PATSTAAPSA PALSTPGIRD SAFSMESIDD YVNVPESGES AEASLDGSRE YVNVSQELHP GAAKTEPAAL SSQEAEEVEE EGAPDYENLQ ELN
Characteristics:	Human LAT full-length ORF ( AAH11563, 1 a.a. - 233 a.a.) recombinant protein with GST-tag at N-terminal.
Purification:	in vitro wheat germ expression system

#### Target Details

Target:	LAT
---------	-----

## Target Details

Alternative Name:	LAT (LAT Products)
Background:	Full Gene Name: linker for activation of T cells Synonyms: LAT1,pp36
Gene ID:	27040
Pathways:	<a href="#">TCR Signaling</a> , <a href="#">Fc-epsilon Receptor Signaling Pathway</a>

## Application Details

Application Notes:	Optimal working dilution should be determined by the investigator.
Comment:	Preparation method: in vitro, wheat germ expression system Product Quality tested by: 12.5% SDS-PAGE Stained with Coomassie Blue.
Restrictions:	For Research Use only

## Handling

Buffer:	50 mM Tris-HCl, 10 mM reduced Glutathione, pH =8.0 in the elution buffer.
Handling Advice:	Aliquot to avoid repeated freezing and thawing.
Storage:	-80 °C
Storage Comment:	Best use within three months from the date of receipt of this protein.

## Images

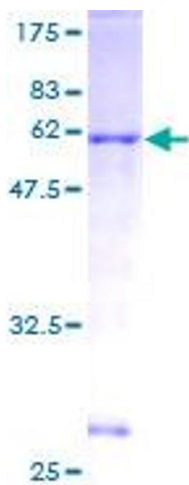


Image 1.