



Datasheet for ABIN1309193
LAX1 Protein (AA 1-398) (GST tag)



[Go to Product page](#)

1 Image

Overview

Quantity:	10 µg
Target:	LAX1
Protein Characteristics:	AA 1-398
Origin:	Human
Source:	Wheat germ
Protein Type:	Recombinant
Purification tag / Conjugate:	This LAX1 protein is labelled with GST tag.
Application:	ELISA, Western Blotting (WB), Affinity Purification (AP), Antibody Array (AA)

Product Details

Purpose:	LAX1 (Human) Recombinant Protein (P01)
Sequence:	MDGVPTPLST IRGRTLESST LHVTPRSLDR NKDQITNIFS GFAGLLAILL VVAVFCILWN WNKRRKRQVP YLRVTVMPLL TLPQTRQRAK NIYDILPWRQ EDLGRHESRS MRIFSTESLL SRNSESPEHV PSQAGNAFQE HTAHIHATEY AVGIYDNAMV PQMCGNLTPS AHCINVRASR DCASISSEDS HDYVNVPTAE EIAETLASTK SPSRNLVFLP STQKLEFTEE RDEGCGDAGD CTSLYSPGAE DSDSLSNPEG SSQISNDYVN MTGLDLSAIQ ERQLWVAFQC CRDYENVPAA DPSGSQQQAE KDVPSSNIGH VEDKTDDPGT HVQCVKRTFL ASGDYADFQP FTQSEDSQMK HREEMSNEDS SDYENVLTAK LGGRDSEQGP GTQLLPDE
Characteristics:	Human LAX1 full-length ORF (NP_060243.2, 1 a.a. - 398 a.a.) recombinant protein with GST-tag at N-terminal.
Purification:	in vitro wheat germ expression system

Target Details

Target:	LAX1
Alternative Name:	LAX1 (LAX1 Products)
Background:	Full Gene Name: lymphocyte transmembrane adaptor 1 Synonyms: FLJ20340,LAX
Gene ID:	54900
NCBI Accession:	NM_017773
Pathways:	Production of Molecular Mediator of Immune Response

Application Details

Application Notes:	Optimal working dilution should be determined by the investigator.
Comment:	Preparation method: in vitro, wheat germ expression system Product Quality tested by: 12.5% SDS-PAGE Stained with Coomassie Blue.
Restrictions:	For Research Use only

Handling

Buffer:	50 mM Tris-HCl, 10 mM reduced Glutathione, pH =8.0 in the elution buffer.
Handling Advice:	Aliquot to avoid repeated freezing and thawing.
Storage:	-80 °C
Storage Comment:	Best use within three months from the date of receipt of this protein.

Images

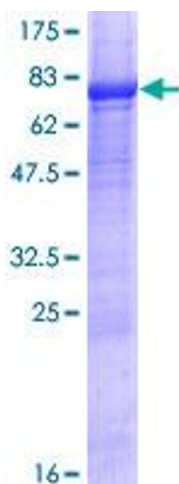


Image 1.