

Datasheet for ABIN1309200

Lamin B Receptor Protein (LBR) (AA 1-615) (GST tag)



[Go to Product page](#)

1 Image

Overview

Quantity:	10 µg
Target:	Lamin B Receptor (LBR)
Protein Characteristics:	AA 1-615
Origin:	Human
Source:	Wheat germ
Protein Type:	Recombinant
Purification tag / Conjugate:	This Lamin B Receptor protein is labelled with GST tag.
Application:	ELISA, Western Blotting (WB), Affinity Purification (AP), Antibody Array (AA)

Product Details

Purpose:	LBR (Human) Recombinant Protein (P01)
Sequence:	<p>MPSRKFADGE VVRGRWPGSS LYYEVEILSH DSTSQLYTVK YKDGTELELK ENDIKPLTSF</p> <p>RQRKGGSTSS SPSRRRGRSRS RSRSRSPGRP PKSARRSASA SHQADIKEAR REVEVKLTPL</p> <p>ILKPFNGNIS RYNGEPEHIE RNDAPHKNTQ EKFSLSQESS YIATQYSLRP RREEVKLKEI</p> <p>DSKEEKYVAK ELAVRTFEVT PIRAKDLEFG GVPGVFLIMF GLPVFLFLL LMCKQKDPSL</p> <p>LNFPPLPAL YELWETRVFG VYLLWFLIQV LFYLLPIGKV VEGTPLIDGR RLKYRLNGFY</p> <p>AFILTSAVIG TSLFQGVEFH YVYSHFLQFA LAATVFCVVL SVYLYMRSLK APRNDLSPAS</p> <p>SGNAVYDFFI GRELNPRIGT FDLKYFCELR PGLIGWVWIN LVMLLAEMKI QDRAVPSLAM</p> <p>ILVNSFQLLY VVDALWNEEA LLTTMDIHD GFGFMLAFGD LVWVPFIYSF QAFYLVSHPN</p> <p>EVSWPASLI IVLKLGGYVI FRGANSQKNA FRKNPSDPKL AHLKTIHTST GKNLLVSGWW</p> <p>GFVRHPNYLG DLIMALAWSL PCGFNHILPY FYIIFTMLL VHREARDEYH CKKKYGVAVE</p> <p>KYCQRVPYRI FPYIY</p>

Product Details

Characteristics: Human LBR full-length ORF (NP_002287.2, 1 a.a. - 615 a.a.) recombinant protein with GST-tag at N-terminal.

Purification: in vitro wheat germ expression system

Target Details

Target: Lamin B Receptor (LBR)

Alternative Name: LBR ([LBR Products](#))

Background: Full Gene Name: lamin B receptor
Synonyms: DHCR14B,FLJ43126,LMN2R,MGC9041,PHA

Gene ID: 3930

NCBI Accession: [NM_002296](#)

Application Details

Application Notes: Optimal working dilution should be determined by the investigator.

Comment: Preparation method: in vitro, wheat germ expression system
Product Quality tested by: 12.5% SDS-PAGE Stained with Coomassie Blue.

Restrictions: For Research Use only

Handling

Buffer: 50 mM Tris-HCl, 10 mM reduced Glutathione, pH =8.0 in the elution buffer.

Handling Advice: Aliquot to avoid repeated freezing and thawing.

Storage: -80 °C

Storage Comment: Best use within three months from the date of receipt of this protein.

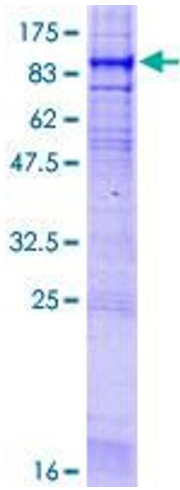


Image 1.