



[Go to Product page](#)

Datasheet for ABIN1309232

Lipocalin 1 Protein (LCN1) (AA 1-176) (GST tag)

1 Image

Overview

Quantity:	10 µg
Target:	Lipocalin 1 (LCN1)
Protein Characteristics:	AA 1-176
Origin:	Human
Source:	Wheat germ
Protein Type:	Recombinant
Purification tag / Conjugate:	This Lipocalin 1 protein is labelled with GST tag.
Application:	Western Blotting (WB), ELISA, Affinity Purification (AP), Antibody Array (AA)

Product Details

Purpose:	LCN1 (Human) Recombinant Protein (P01)
Sequence:	MKPLLLAVSL GLIAALQAHH LLASDEEIQD VSGTWYLKAM TVDREFPEMN LESVTPMTLT TLEGGNLEAK VTMLISGRCQ EVKAVLEKTD EPGKYTADGG KHVAYIIRSH VKDHYIFYCE GELHGKPVVRG VKLVGRDPKN NLEALEDFEK AAGARGLSTE SILIPRQSET CSPGSD
Characteristics:	Human LCN1 full-length ORF (NP_002288.1, 1 a.a. - 176 a.a.) recombinant protein with GST-tag at N-terminal.
Purification:	in vitro wheat germ expression system

Target Details

Target:	Lipocalin 1 (LCN1)
Alternative Name:	LCN1 (LCN1 Products)

Target Details

Background: Full Gene Name: lipocalin 1 (tear prealbumin)
Synonyms: MGC71975,PMFA,TP,VEGP

Gene ID: 3933

NCBI Accession: [NM_002297](#)

Application Details

Application Notes: Optimal working dilution should be determined by the investigator.

Comment: Preparation method: in vitro, wheat germ expression system
Product Quality tested by: 12.5% SDS-PAGE Stained with Coomassie Blue.

Restrictions: For Research Use only

Handling

Buffer: 50 mM Tris-HCl, 10 mM reduced Glutathione, pH =8.0 in the elution buffer.

Handling Advice: Aliquot to avoid repeated freezing and thawing.

Storage: -80 °C

Storage Comment: Best use within three months from the date of receipt of this protein.

Images

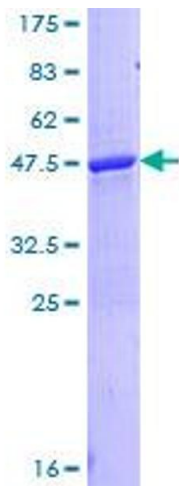


Image 1.