



[Go to Product page](#)

Datasheet for ABIN1309265

LDHAL6B Protein (AA 1-381) (GST tag)

1 Image

Overview

Quantity:	10 µg
Target:	LDHAL6B
Protein Characteristics:	AA 1-381
Origin:	Human
Source:	Wheat germ
Protein Type:	Recombinant
Purification tag / Conjugate:	This LDHAL6B protein is labelled with GST tag.
Application:	ELISA, Western Blotting (WB), Affinity Purification (AP), Antibody Array (AA)

Product Details

Purpose:	LDHAL6B (Human) Recombinant Protein (P01)
Sequence:	MSWTVPVVRA SQRMSSVGAN FLCLGMALCL RQATRIPLNG TWLFTPVSKM ATVKSELIER FTSEKPVHHS KVSIIIGTGSV GMACAISILL KGLSDELALV DLDEDKLGKE TMDLQHGSPF TKMPNIVCSK DYFVTANSNL VIITAGARQE KGETRLNLVQ RNVAIFKLMI SSVQYSPHC KLIIVSNPVD ILTYVAWKLS AFPKNRIIGS GCNLDTARFR FLIGQKLGIIH SESCHGWILG EHGDSSVPVW SGVNIAGVPL KDLNSDIGTD KDPEQWKNVH KEVTATAYEI IKMKGYTSWA IGLSVADLTE SILKNLRRIH PVSTITKGLY GIDEEVFLSI PCILGENGIT NLIKIKLTPE EEHLKKS AK TLWEIQNKLK L
Characteristics:	Human LDHAL6B full-length ORF (AAH22034.1, 1 a.a. - 381 a.a.) recombinant protein with GST-tag at N-terminal.
Purification:	in vitro wheat germ expression system

Target Details

Target:	LDHAL6B
Alternative Name:	LDHAL6B (LDHAL6B Products)
Background:	Full Gene Name: lactate dehydrogenase A-like 6B Synonyms: LDHAL6,LDHL
Gene ID:	92483

Application Details

Application Notes:	Optimal working dilution should be determined by the investigator.
Comment:	Preparation method: in vitro, wheat germ expression system Product Quality tested by: 12.5% SDS-PAGE Stained with Coomassie Blue.
Restrictions:	For Research Use only

Handling

Buffer:	50 mM Tris-HCl, 10 mM reduced Glutathione, pH =8.0 in the elution buffer.
Handling Advice:	Aliquot to avoid repeated freezing and thawing.
Storage:	-80 °C
Storage Comment:	Best use within three months from the date of receipt of this protein.

Images

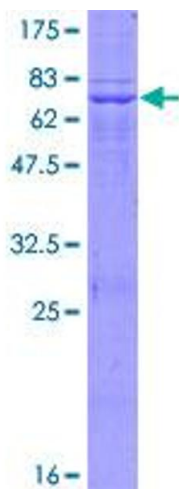


Image 1.