



[Go to Product page](#)

Datasheet for ABIN1309267

LDHAL6B Protein (AA 282-381) (GST tag)

1 Image

Overview

Quantity:	10 µg
Target:	LDHAL6B
Protein Characteristics:	AA 282-381
Origin:	Human
Source:	Wheat germ
Protein Type:	Recombinant
Purification tag / Conjugate:	This LDHAL6B protein is labelled with GST tag.
Application:	ELISA, Western Blotting (WB), Affinity Purification (AP), Antibody Array (AA)

Product Details

Purpose:	LDHAL6B (Human) Recombinant Protein (Q01)
Sequence:	EVTATAYEII KMKGYTSWAI GLSVADLTES ILKNLRRRIHP VSTITKGLYG IDEEVFLSIP CILGENGITN LIKIKLTPEE EAHLKKS Akt LWEIQNK LKL
Characteristics:	Human LDHAL6B partial ORF (NP_005497, 282 a.a. - 381 a.a.) recombinant protein with GST-tag at N-terminal.
Purification:	in vitro wheat germ expression system

Target Details

Target:	LDHAL6B
Alternative Name:	LDHAL6B (LDHAL6B Products)

Target Details

Background:	Full Gene Name: lactate dehydrogenase A-like 6B Synonyms: LDHAL6,LDHL
Gene ID:	92483
NCBI Accession:	NM_033195

Application Details

Application Notes:	Optimal working dilution should be determined by the investigator.
Comment:	Preparation method: in vitro, wheat germ expression system Product Quality tested by: 12.5% SDS-PAGE Stained with Coomassie Blue.
Restrictions:	For Research Use only

Handling

Buffer:	50 mM Tris-HCl, 10 mM reduced Glutathione, pH =8.0 in the elution buffer.
Handling Advice:	Aliquot to avoid repeated freezing and thawing.
Storage:	-80 °C
Storage Comment:	Best use within three months from the date of receipt of this protein.

Images

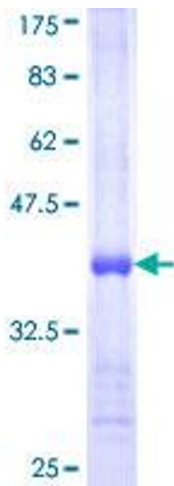


Image 1.