

Datasheet for ABIN1309273

Lactate Dehydrogenase C Protein (LDHC) (AA 71-160) (GST tag)



[Go to Product page](#)

1 Image

Overview

Quantity:	10 µg
Target:	Lactate Dehydrogenase C (LDHC)
Protein Characteristics:	AA 71-160
Origin:	Human
Source:	Wheat germ
Protein Type:	Recombinant
Purification tag / Conjugate:	This Lactate Dehydrogenase C protein is labelled with GST tag.
Application:	Western Blotting (WB), ELISA, Affinity Purification (AP), Antibody Array (AA)

Product Details

Purpose:	LDHC (Human) Recombinant Protein (Q01)
Sequence:	FFSTSKITSG KDYSVSANSR IVIVTAGARQ QEGETRLALV QRNVAIMKSI IPAIVHYS CKILVSNPV DILTYIVWKI SGLPVTRVIG
Characteristics:	Human LDHC partial ORF (NP_002292.1, 71 a.a. - 160 a.a.) recombinant protein with GST-tag at N-terminal.
Purification:	in vitro wheat germ expression system

Target Details

Target:	Lactate Dehydrogenase C (LDHC)
Alternative Name:	LDHC (LDHC Products)

Target Details

Background: Full Gene Name: lactate dehydrogenase C
Synonyms: CT32,LDH3,LDHX,MGC111073

Gene ID: 3948

NCBI Accession: [NM_002301](#)

Pathways: [Ribonucleoside Biosynthetic Process](#), [Warburg Effect](#)

Application Details

Application Notes: Optimal working dilution should be determined by the investigator.

Comment: Preparation method: in vitro, wheat germ expression system
Product Quality tested by: 12.5% SDS-PAGE Stained with Coomassie Blue.

Restrictions: For Research Use only

Handling

Buffer: 50 mM Tris-HCl, 10 mM reduced Glutathione, pH =8.0 in the elution buffer.

Handling Advice: Aliquot to avoid repeated freezing and thawing.

Storage: -80 °C

Storage Comment: Best use within three months from the date of receipt of this protein.

Images

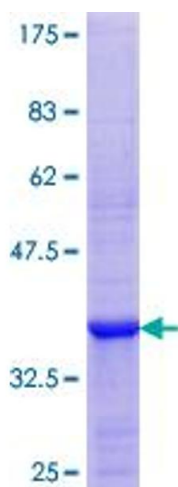


Image 1.