

Datasheet for ABIN1309309

## Leptin Receptor Protein (LEPR) (AA 31-130) (GST tag)



[Go to Product page](#)

### 1 Image

#### Overview

Quantity:	10 µg
Target:	Leptin Receptor (LEPR)
Protein Characteristics:	AA 31-130
Origin:	Human
Source:	Wheat germ
Protein Type:	Recombinant
Purification tag / Conjugate:	This Leptin Receptor protein is labelled with GST tag.
Application:	Western Blotting (WB), ELISA, Affinity Purification (AP), Antibody Array (AA)

#### Product Details

Purpose:	LEPR (Human) Recombinant Protein (Q01)
Sequence:	WRFKLSMPP NSTYDYFLLP AGLSKNTSNS NGHJETAVEP KFNSSGTHFS NLSKTTFHCC FRSEQDRNCS LCADNIEGKT FVSTVNSLVF QQIDANWNIQ
Characteristics:	Human LEPR partial ORF ( NP_001003679, 31 a.a. - 130 a.a.) recombinant protein with GST-tag at N-terminal.
Purification:	in vitro wheat germ expression system

#### Target Details

Target:	Leptin Receptor (LEPR)
Alternative Name:	LEPR ( <a href="#">LEPR Products</a> )

## Target Details

---

Background: Full Gene Name: leptin receptor  
Synonyms: CD295,OBR

---

Gene ID: 3953

---

NCBI Accession: [NM\\_001003679](#)

---

Pathways: [JAK-STAT Signaling](#), [AMPK Signaling](#), [Feeding Behaviour](#)

---

## Application Details

---

Application Notes: Optimal working dilution should be determined by the investigator.

---

Comment: Preparation method: in vitro, wheat germ expression system  
Product Quality tested by: 12.5% SDS-PAGE Stained with Coomassie Blue.

---

Restrictions: For Research Use only

---

## Handling

---

Buffer: 50 mM Tris-HCl, 10 mM reduced Glutathione, pH =8.0 in the elution buffer.

---

Handling Advice: Aliquot to avoid repeated freezing and thawing.

---

Storage: -80 °C

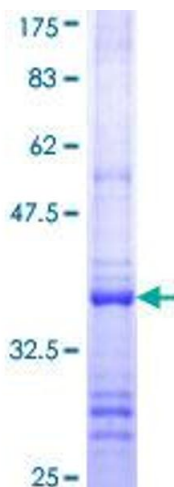
---

Storage Comment: Best use within three months from the date of receipt of this protein.

---

## Images

---



**Image 1.**