

Datasheet for ABIN1309328
LGALS13 Protein (AA 1-139) (GST tag)



[Go to Product page](#)

1 Image

Overview

Quantity:	10 µg
Target:	LGALS13
Protein Characteristics:	AA 1-139
Origin:	Human
Source:	Wheat germ
Protein Type:	Recombinant
Purification tag / Conjugate:	This LGALS13 protein is labelled with GST tag.
Application:	Western Blotting (WB), ELISA, Affinity Purification (AP), Antibody Array (AA)

Product Details

Purpose:	LGALS13 (Human) Recombinant Protein (P02)
Sequence:	MSSLPVPYKL PVSLSVGSCV IIKGTPIHSF INDPQLQVDF YTDMEDESDI AFRFRVHFGN HVVMNRREFG IWMLEETTDY VPFEDGKQFE LCIYVHYNEY EIKVNGIRIY GFVHRIPPSF VKMVQVSRDI SLTSVCVCN
Characteristics:	Human LGALS13 full-length ORF (AAH66304.1, 1 a.a. - 139 a.a.) recombinant protein with GST-tag at N-terminal.
Purification:	in vitro wheat germ expression system

Target Details

Target:	LGALS13
Alternative Name:	LGALS13 (LGALS13 Products)

Target Details

Background: Full Gene Name: lectin, galactoside-binding, soluble, 13
Synonyms: GAL13,PLAC8,PP13

Gene ID: 29124

Application Details

Application Notes: Optimal working dilution should be determined by the investigator.

Comment: Preparation method: in vitro, wheat germ expression system
Product Quality tested by: 12.5% SDS-PAGE Stained with Coomassie Blue.

Restrictions: For Research Use only

Handling

Buffer: 50 mM Tris-HCl, 10 mM reduced Glutathione, pH =8.0 in the elution buffer.

Handling Advice: Aliquot to avoid repeated freezing and thawing.

Storage: -80 °C

Storage Comment: Best use within three months from the date of receipt of this protein.

Images

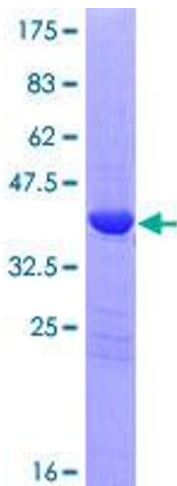


Image 1.