

Datasheet for ABIN1309330

LGALS14 Protein (AA 1-168) (GST tag)



[Go to Product page](#)

1 Image

Overview

Quantity:	10 µg
Target:	LGALS14
Protein Characteristics:	AA 1-168
Origin:	Human
Source:	Wheat germ
Protein Type:	Recombinant
Purification tag / Conjugate:	This LGALS14 protein is labelled with GST tag.
Application:	Western Blotting (WB), ELISA, Affinity Purification (AP), Antibody Array (AA)

Product Details

Purpose:	LGALS14 (Human) Recombinant Protein (P01)
Sequence:	MSLTHRLHLC KYWGCAVSNV CRFWEGRPLP LMIVVPYTLV VSLPVGSCVI ITGTPILTFV KDPQLEVNFY TGMDESDIA FQFRLHFGHP AIMNSCVFGI WRYEEKCYL PFEDGKPFEL CIYVRHKEYK VMVNGQRIYN FAHRFPASV KMLQVFRDIS LTRVLISD
Characteristics:	Human LGALS14 full-length ORF (NP_982297.1, 1 a.a. - 168 a.a.) recombinant protein with GST-tag at N-terminal.
Purification:	in vitro wheat germ expression system

Target Details

Target:	LGALS14
Alternative Name:	LGALS14 (LGALS14 Products)

Target Details

Background:	Full Gene Name: lectin, galactoside-binding, soluble, 14 Synonyms: CLC2,MGC22235,PPL13
Gene ID:	56891
NCBI Accession:	NM_203471

Application Details

Application Notes:	Optimal working dilution should be determined by the investigator.
Comment:	Preparation method: in vitro, wheat germ expression system Product Quality tested by: 12.5% SDS-PAGE Stained with Coomassie Blue.
Restrictions:	For Research Use only

Handling

Buffer:	50 mM Tris-HCl, 10 mM reduced Glutathione, pH =8.0 in the elution buffer.
Handling Advice:	Aliquot to avoid repeated freezing and thawing.
Storage:	-80 °C
Storage Comment:	Best use within three months from the date of receipt of this protein.

Images

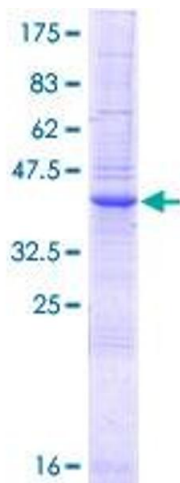


Image 1.