



[Go to Product page](#)

Datasheet for ABIN1309354

LGI4 Protein (AA 438-537) (GST tag)

1 Image

Overview

Quantity:	10 µg
Target:	LGI4
Protein Characteristics:	AA 438-537
Origin:	Human
Source:	Wheat germ
Protein Type:	Recombinant
Purification tag / Conjugate:	This LGI4 protein is labelled with GST tag.
Application:	ELISA, Western Blotting (WB), Affinity Purification (AP), Antibody Array (AA)

Product Details

Purpose:	LGI4 (Human) Recombinant Protein (Q01)
Sequence:	DGSMFRLQ LPSRGAHV FQ PLLIARDQLA ILGSDFAFSQ VLRLEPDKGL LEPLQELGPP ALVAPRAFAH ITMAGRRFLF AACFKGPTQI YQHHEIDLSA
Characteristics:	Human LGI4 partial ORF (NP_644813, 438 a.a. - 537 a.a.) recombinant protein with GST-tag at N-terminal.
Purification:	in vitro wheat germ expression system

Target Details

Target:	LGI4
Alternative Name:	LGI4 (LGI4 Products)

Target Details

Background:	Full Gene Name: leucine-rich repeat LGI family, member 4 Synonyms: LGIL3
Gene ID:	163175
NCBI Accession:	NM_139284

Application Details

Application Notes:	Optimal working dilution should be determined by the investigator.
Comment:	Preparation method: in vitro, wheat germ expression system Product Quality tested by: 12.5% SDS-PAGE Stained with Coomassie Blue.
Restrictions:	For Research Use only

Handling

Buffer:	50 mM Tris-HCl, 10 mM reduced Glutathione, pH =8.0 in the elution buffer.
Handling Advice:	Aliquot to avoid repeated freezing and thawing.
Storage:	-80 °C
Storage Comment:	Best use within three months from the date of receipt of this protein.

Images

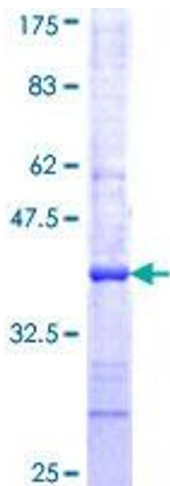


Image 1.