

Datasheet for ABIN1309407

LILRA2 Protein (AA 322-383) (GST tag)



[Go to Product page](#)

1 Image

Overview

Quantity:	10 µg
Target:	LILRA2
Protein Characteristics:	AA 322-383
Origin:	Human
Source:	Wheat germ
Protein Type:	Recombinant
Purification tag / Conjugate:	This LILRA2 protein is labelled with GST tag.
Application:	Western Blotting (WB), ELISA, Affinity Purification (AP), Antibody Array (AA)

Product Details

Purpose:	LILRA2 (Human) Recombinant Protein (Q01)
Sequence:	DRPSSLVQPV PTVAPGKNVT LLCQSRGQFH TFLLTKEGAG HPPLHLRSEH QAQQNQAEFR MG
Characteristics:	Human LILRA2 partial ORF (NP_006857, 322 a.a. - 383 a.a.) recombinant protein with GST-tag at N-terminal.
Purification:	in vitro wheat germ expression system

Target Details

Target:	LILRA2
Alternative Name:	LILRA2 (LILRA2 Products)
Background:	Full Gene Name: leukocyte immunoglobulin-like receptor, subfamily A (with TM domain),

Target Details

member 2

Synonyms: CD85H,ILT1,LIR-7,LIR7

Gene ID: 11027

NCBI Accession: [NM_006866](#)

Application Details

Application Notes: Optimal working dilution should be determined by the investigator.

Comment: Preparation method: in vitro, wheat germ expression system
Product Quality tested by: 12.5% SDS-PAGE Stained with Coomassie Blue.

Restrictions: For Research Use only

Handling

Buffer: 50 mM Tris-HCl, 10 mM reduced Glutathione, pH =8.0 in the elution buffer.

Handling Advice: Aliquot to avoid repeated freezing and thawing.

Storage: -80 °C

Storage Comment: Best use within three months from the date of receipt of this protein.

Images

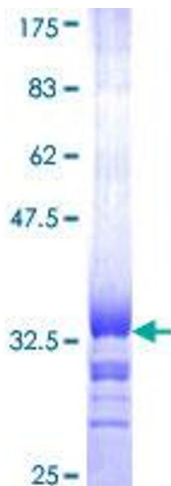


Image 1.