

Datasheet for ABIN1309451  
**LIN7A Protein (AA 1-233) (GST tag)**



[Go to Product page](#)

1 Image

Overview

Quantity:	10 µg
Target:	LIN7A
Protein Characteristics:	AA 1-233
Origin:	Human
Source:	Wheat germ
Protein Type:	Recombinant
Purification tag / Conjugate:	This LIN7A protein is labelled with GST tag.
Application:	ELISA, Western Blotting (WB), Affinity Purification (AP), Antibody Array (AA)

Product Details

Purpose:	LIN7A (Human) Recombinant Protein (P01)
Sequence:	MLKPSVTSAP TADMATLTVV QPLTLDRDVA RAIELLEKLQ ESGEVPVHKL QSLKKVLQSE FCTAIREVYQ YMHETITVNG CPEFRARATA KATVAFAAAS EGHSHPRVVE LPKTDEGLGF NVMGGKEQNS PIYISRIIPG GVAERHGGLK RGDQLLSVNG VSVEGEHHEK AVELLKAARD SVKLVVRYTP KVLEEMEARF EKLRTARRRQ QQQLLIQQQQ QQQQQQTQQN HMS
Characteristics:	Human LIN7A full-length ORF ( NP_004655.1, 1 a.a. - 233 a.a.) recombinant protein with GST-tag at N-terminal.
Purification:	in vitro wheat germ expression system

Target Details

Target:	LIN7A
---------	-------

## Target Details

Alternative Name:	LIN7A ( <a href="#">LIN7A Products</a> )
Background:	Full Gene Name: lin-7 homolog A (C. elegans) Synonyms: LIN-7A,LIN7,MALS-1,MGC148143,TIP-33,VELI1
Gene ID:	8825
NCBI Accession:	<a href="#">NM_004664</a>
Pathways:	<a href="#">Synaptic Membrane</a>

## Application Details

Application Notes:	Optimal working dilution should be determined by the investigator.
Comment:	Preparation method: in vitro, wheat germ expression system Product Quality tested by: 12.5% SDS-PAGE Stained with Coomassie Blue.
Restrictions:	For Research Use only

## Handling

Buffer:	50 mM Tris-HCl, 10 mM reduced Glutathione, pH =8.0 in the elution buffer.
Handling Advice:	Aliquot to avoid repeated freezing and thawing.
Storage:	-80 °C
Storage Comment:	Best use within three months from the date of receipt of this protein.

## Images

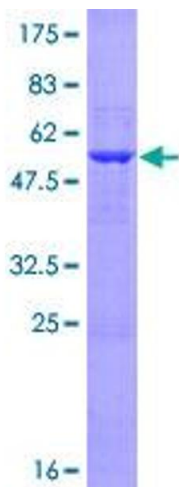


Image 1.