

Datasheet for ABIN1309460
LINGO2 Protein (AA 1-606) (GST tag)



[Go to Product page](#)

1 Image

Overview

Quantity:	25 µg
Target:	LINGO2
Protein Characteristics:	AA 1-606
Origin:	Human
Source:	Wheat germ
Protein Type:	Recombinant
Purification tag / Conjugate:	This LINGO2 protein is labelled with GST tag.
Application:	ELISA, Western Blotting (WB), Affinity Purification (AP), Antibody Array (AA)

Product Details

Purpose:	LINGO2 (Human) Recombinant Protein (P01)
Sequence:	<p>MLHTAISCWQ PFLGLAVVLI FMGSTIGCPA RCECSAQNKVS SCHRRRLIA IPEGIPIETK ILDLSKNRLK SVNPEEFISY PLLEEIDLSD NIIANVEPGA FNNLFLNLSL RLKGNRLKLV PLGVFTGLSN LTKLDISENK IVILLDYMFQ DLHNLKSLEV GDNDLVYISH RAFSGLLSLE QLTLEKCNLT AVPTEALSHL RSLISLHLKH LNINNMPVYA FKRLFHLKHL EIDYWPLLDLDM MPANSLYGLN LTSLSVTNTN LSTVPFLAFK HLVYLTHLNL SYNPISTIEA GMFSDLIRLQ ELHIVGAQLR TIEPHSFQGL RFLRVLNVSQ NLETTLEENV FSSPRALEVL SINNNPLACD CROLLWILQRQ PTLQFGGQQP MCAGPDTIRE RSFKDFHSTA LSFYFTCKKP KIREKKLQHL LVDEGQTVQL ECSADGDPQP VISWVTPRRR FITTKSNGRA TVLGDGTLEI RFAQDQDSGM YVCIASNAAG NDTFTASLTV KGFASDRFLY ANRTPMYMTD SNTDISNGTN ANTFSLDLKT ILVSTAMGCF TFLGVVLFVCF LLLFVWSRGK GKHKNSIDLE YVPRKNNGAV VEGEVAGPRR FNMKMI</p>

Product Details

Characteristics:	Human LINGO2 full-length ORF (NP_689783.1, 1 a.a. - 606 a.a.) recombinant protein with GST-tag at N-terminal.
Purification:	in vitro wheat germ expression system

Target Details

Target:	LINGO2
Alternative Name:	LINGO2 (LINGO2 Products)
Background:	Full Gene Name: leucine rich repeat and Ig domain containing 2 Synonyms: FLJ31810,LERN3,LRRN6C
Gene ID:	158038
NCBI Accession:	NM_152570

Application Details

Application Notes:	Optimal working dilution should be determined by the investigator.
Comment:	Preparation method: in vitro, wheat germ expression system Product Quality tested by: 12.5% SDS-PAGE Stained with Coomassie Blue.
Restrictions:	For Research Use only

Handling

Buffer:	50 mM Tris-HCl, 10 mM reduced Glutathione, pH =8.0 in the elution buffer.
Handling Advice:	Aliquot to avoid repeated freezing and thawing.
Storage:	-80 °C
Storage Comment:	Best use within three months from the date of receipt of this protein.

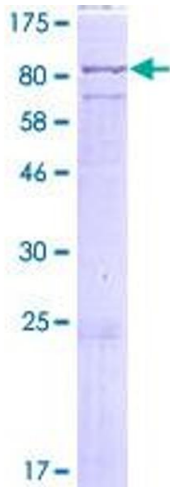


Image 1.