



[Go to Product page](#)

Datasheet for ABIN1309521

LM07 Protein (AA 453-540) (GST tag)

1 Image

Overview

Quantity:	10 µg
Target:	LM07
Protein Characteristics:	AA 453-540
Origin:	Human
Source:	Wheat germ
Protein Type:	Recombinant
Purification tag / Conjugate:	This LM07 protein is labelled with GST tag.
Application:	Affinity Purification (AP), Antibody Array (AA), ELISA, Western Blotting (WB)

Product Details

Purpose:	LM07 (Human) Recombinant Protein (Q01)
Sequence:	DRESQNQKST VPSRRRMYSF DDVLEEGKRP PTMTVSEASY QSERVEEKGA TYPSEIPKED STTFAKREDR VTTEIQLPSQ SPVEEQSP
Characteristics:	Human LM07 partial ORF (NP_005349, 453 a.a. - 540 a.a.) recombinant protein with GST-tag at N-terminal.
Purification:	in vitro wheat germ expression system

Target Details

Target:	LM07
Alternative Name:	LM07 (LM07 Products)

Target Details

Background:	Full Gene Name: LIM domain 7 Synonyms: FBX20,FBXO20,KIAA0858,LOMP
Gene ID:	4008
NCBI Accession:	NM_005358

Application Details

Application Notes:	Optimal working dilution should be determined by the investigator.
Comment:	Preparation method: in vitro, wheat germ expression system Product Quality tested by: 12.5% SDS-PAGE Stained with Coomassie Blue.
Restrictions:	For Research Use only

Handling

Buffer:	50 mM Tris-HCl, 10 mM reduced Glutathione, pH =8.0 in the elution buffer.
Handling Advice:	Aliquot to avoid repeated freezing and thawing.
Storage:	-80 °C
Storage Comment:	Best use within three months from the date of receipt of this protein.

Images

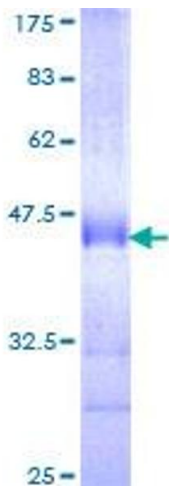


Image 1.