



[Go to Product page](#)

Datasheet for ABIN1309547
ZG16B Protein (AA 18-172) (GST tag)

1 Image

Overview

Quantity:	10 µg
Target:	ZG16B
Protein Characteristics:	AA 18-172
Origin:	Human
Source:	Wheat germ
Protein Type:	Recombinant
Purification tag / Conjugate:	This ZG16B protein is labelled with GST tag.
Application:	Western Blotting (WB), ELISA, Affinity Purification (AP), Antibody Array (AA)

Product Details

Purpose:	LOC124220 (Human) Recombinant Protein (P01)
Sequence:	KMYGPGGGKY FSTTEDYDHE ITGLRVSVGL LLVKSQVQKL GDSWDVKLGA LGGNTQEVTL QPGEYITKVF VAFQAFLRGM VMYTSKDRYF YFGKLDGQIS SAYPSQEGQV LVGIYGQYQL LGIKSIGFEW NYPLEEPTTE PPVNLTYSAN SPVGR
Characteristics:	Human LOC124220 full-length ORF (AAH09722, 18 a.a. - 172 a.a.) recombinant protein with GST-tag at N-terminal.
Purification:	in vitro wheat germ expression system

Target Details

Target:	ZG16B
Abstract:	ZG16B Products

Target Details

Background: Full Gene Name: similar to common salivary protein 1
Synonyms: HRPE773,PRO1567

Gene ID: 124220

Application Details

Application Notes: Optimal working dilution should be determined by the investigator.

Comment: Preparation method: in vitro, wheat germ expression system
Product Quality tested by: 12.5% SDS-PAGE Stained with Coomassie Blue.

Restrictions: For Research Use only

Handling

Buffer: 50 mM Tris-HCl, 10 mM reduced Glutathione, pH =8.0 in the elution buffer.

Handling Advice: Aliquot to avoid repeated freezing and thawing.

Storage: -80 °C

Storage Comment: Best use within three months from the date of receipt of this protein.

Images

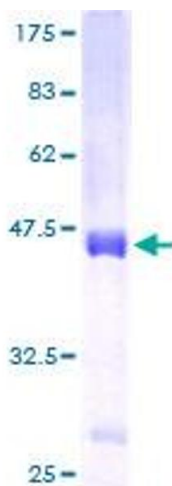


Image 1.