

Datasheet for ABIN1309557  
**SLC25A48 Protein (AA 1-157) (GST tag)**



[Go to Product page](#)

1 Image

Overview

Quantity:	10 µg
Target:	SLC25A48
Protein Characteristics:	AA 1-157
Origin:	Human
Source:	Wheat germ
Protein Type:	Recombinant
Purification tag / Conjugate:	This SLC25A48 protein is labelled with GST tag.
Application:	ELISA, Western Blotting (WB), Affinity Purification (AP), Antibody Array (AA)

Product Details

Purpose:	SLC25A48 (Human) Recombinant Protein (P01)
Sequence:	MGSFQLEDFA AGWIGGAASV IVGHPLDTVK TRLQAGVGYG NTLSCIRVVY RRESMFGFFK GMSFPLASIA VYNSVVFVGFV SNTQRFLSQH RCGEPEASPP RTLSDLLLAS MVAGVVSGL GGPVDLIKIR LQMQTQPFRD GGEHRMTTVF PGPHLCM
Characteristics:	Human SLC25A48 full-length ORF ( AAH25747.1, 1 a.a. - 157 a.a.) recombinant protein with GST-tag at N-terminal.
Purification:	in vitro wheat germ expression system

Target Details

Target:	SLC25A48
Alternative Name:	SLC25A48 ( <a href="#">SLC25A48 Products</a> )

## Target Details

Background: Full Gene Name: solute carrier family 25, member 48  
Synonyms:

Gene ID: 153328

## Application Details

Application Notes: Optimal working dilution should be determined by the investigator.

Comment: Preparation method: in vitro, wheat germ expression system  
Product Quality tested by: 12.5% SDS-PAGE Stained with Coomassie Blue.

Restrictions: For Research Use only

## Handling

Buffer: 50 mM Tris-HCl, 10 mM reduced Glutathione, pH =8.0 in the elution buffer.

Handling Advice: Aliquot to avoid repeated freezing and thawing.

Storage: -80 °C

Storage Comment: Best use within three months from the date of receipt of this protein.

## Images

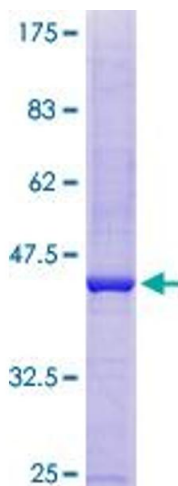


Image 1.