

Datasheet for ABIN1309577

## CCSMST1 Protein (AA 1-356) (GST tag)



[Go to Product page](#)

### 1 Image

#### Overview

Quantity:	10 µg
Target:	CCSMST1 (C16ORF91)
Protein Characteristics:	AA 1-356
Origin:	Human
Source:	Wheat germ
Protein Type:	Recombinant
Purification tag / Conjugate:	This CCSMST1 protein is labelled with GST tag.
Application:	ELISA, Western Blotting (WB), Affinity Purification (AP), Antibody Array (AA)

#### Product Details

Purpose:	LOC283951 (Human) Recombinant Protein (P01)
Sequence:	MGLMVRGGVT CRSQERLLGV GTGTASAQPP VTASPYCSFT GRSRADAPAR AAGNGQPRLR AQVDLSSASS VLVTVLDAKA LPLTLLSWGSLCATAQNHNN QEGAPAQPKG SMANQRALRF PPPSGSPGGL HTRMRLTSPQPHFEPPT TVGAPRSLQG DWFGSDSRAV RALRLIGWAS RSLHPLPGSR DRAHPAAEEE DDPDRPIEFS SSKANPHRWS VGHTMGKGHQ RPWWKVLPLS CFLVALIWC YLREESEADQ WLRQEGSRQP PFGFDVTFAR DCPGYACVLS TEGLGWWMGH LAMLIRVKAE QNLSRSETAP RLALDVQGFH RQDFSDPWGR FQLHCMLLDL PSLCIT
Characteristics:	Human LOC283951 full-length ORF (AA146484.1, 1 a.a. - 356 a.a.) recombinant protein with GST-tag at N-terminal.
Purification:	in vitro wheat germ expression system

## Target Details

Target:	CCSMST1 (C16ORF91)
Abstract:	<a href="#">C16ORF91 Products</a>
Background:	Full Gene Name: hypothetical protein LOC283951 Synonyms: MGC104723,gs103
Gene ID:	283951

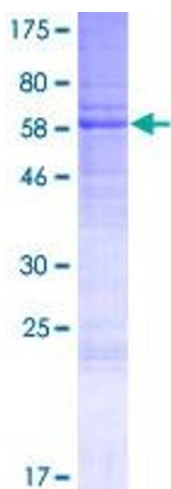
## Application Details

Application Notes:	Optimal working dilution should be determined by the investigator.
Comment:	Preparation method: in vitro, wheat germ expression system Product Quality tested by: 12.5% SDS-PAGE Stained with Coomassie Blue.
Restrictions:	For Research Use only

## Handling

Buffer:	50 mM Tris-HCl, 10 mM reduced Glutathione, pH =8.0 in the elution buffer.
Handling Advice:	Aliquot to avoid repeated freezing and thawing.
Storage:	-80 °C
Storage Comment:	Best use within three months from the date of receipt of this protein.

## Images



**Image 1.**