

Datasheet for ABIN1309591

FAM228B Protein (AA 1-206) (GST tag)[Go to Product page](#)**1** Image

Overview

Quantity:	25 µg
Target:	FAM228B
Protein Characteristics:	AA 1-206
Origin:	Human
Source:	Wheat germ
Protein Type:	Recombinant
Purification tag / Conjugate:	This FAM228B protein is labelled with GST tag.
Application:	ELISA, Western Blotting (WB), Affinity Purification (AP), Antibody Array (AA)

Product Details

Purpose:	LOC375190 (Human) Recombinant Protein (P01)
Sequence:	MAATKTASYD EHRPEKLRE WPEPEVSLM EVLAREDIDE AVCAILFKEN SIVKVTVPPF VDPLFQRQQE VDEERTGLQ CETGKRHSIK ELEEIEKARL HASSPYFTFT SHCVIPKEWH KASARARSKT YKYSPEKLIY ADKKQKRKEK KTADLSQAAF ERQLSSKLS QKNKVGERKG LVSRLGRGW HAGLCSTHEQ HILVPE
Characteristics:	Human LOC375190 full-length ORF (NP_001035800.1, 1 a.a. - 206 a.a.) recombinant protein with GST-tag at N-terminal.
Purification:	in vitro wheat germ expression system

Target Details

Target:	FAM228B
---------	---------

Target Details

Alternative Name:	LOC375190 (FAM228B Products)
Background:	Full Gene Name: hypothetical LOC375190 Synonyms: FLJ30851
Gene ID:	375190
NCBI Accession:	NM_001040710

Application Details

Application Notes:	Optimal working dilution should be determined by the investigator.
Comment:	Preparation method: in vitro, wheat germ expression system Product Quality tested by: 12.5% SDS-PAGE Stained with Coomassie Blue.
Restrictions:	For Research Use only

Handling

Buffer:	50 mM Tris-HCl, 10 mM reduced Glutathione, pH =8.0 in the elution buffer.
Handling Advice:	Aliquot to avoid repeated freezing and thawing.
Storage:	-80 °C
Storage Comment:	Best use within three months from the date of receipt of this protein.

Images

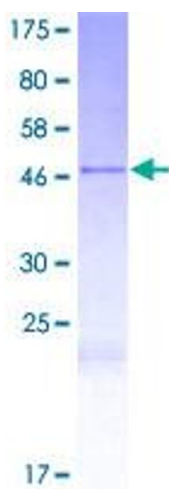


Image 1.