

Datasheet for ABIN1309597  
**C3P1 Protein (AA 1-363) (GST tag)**



[Go to Product page](#)

1 Image

Overview

Quantity:	10 µg
Target:	C3P1
Protein Characteristics:	AA 1-363
Origin:	Human
Source:	Wheat germ
Protein Type:	Recombinant
Purification tag / Conjugate:	This C3P1 protein is labelled with GST tag.
Application:	ELISA, Western Blotting (WB), Affinity Purification (AP), Antibody Array (AA)

Product Details

Purpose:	LOC388503 (Human) Recombinant Protein (P01)
Sequence:	MPVRTLPES WLWRKFTLPK SKSGISHYPI SVKVPDSITT WQFVWVSLKA GQGLCVSDPF ELTVMKSFFV DLKLPSSVIR NEQVQIQAML YNFRDRQAKV RVEFPHKETL CSASKPGAPS HQAGVQIQQT SYSIVLEPQG QTQTKLVPRQ EFLNMVPDTE AEFVISVQGY TQMLTHRSSD GTYHTSKGNP GSTWLTSYVF RVFALAYSMM TTQVLSLSSL CDMANWIIID RQAEDGHFLE KGPVVMTSMQ DGYQGSEEDV SLTALVLIAL NEGKELCRQK NLMASIERAR GFLERKLPDI QTTFAVAIAS YALALANSSQ ANDCLDSFAS PSGCGMLLNQ PQSWSGEGVI SNPAMCYSSL SVS
Characteristics:	Human LOC388503 full-length ORF ( AAI48838.1, 1 a.a. - 363 a.a.) recombinant protein with GST-tag at N-terminal.
Purification:	in vitro wheat germ expression system

## Target Details

Target:	C3P1
Abstract:	<a href="#">C3P1 Products</a>
Background:	Full Gene Name: similar to Complement C3 precursor Synonyms:
Gene ID:	388503

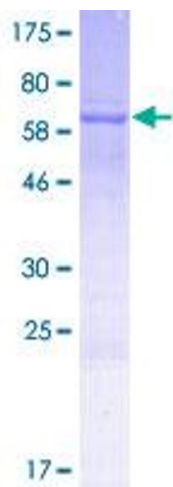
## Application Details

Application Notes:	Optimal working dilution should be determined by the investigator.
Comment:	Preparation method: in vitro, wheat germ expression system Product Quality tested by: 12.5% SDS-PAGE Stained with Coomassie Blue.
Restrictions:	For Research Use only

## Handling

Buffer:	50 mM Tris-HCl, 10 mM reduced Glutathione, pH =8.0 in the elution buffer.
Handling Advice:	Aliquot to avoid repeated freezing and thawing.
Storage:	-80 °C
Storage Comment:	Best use within three months from the date of receipt of this protein.

## Images



**Image 1.**