

Datasheet for ABIN1309599

RPSAP58 Protein (AA 1-295) (GST tag)[Go to Product page](#)**1** Image

Overview

Quantity:	10 µg
Target:	RPSAP58
Protein Characteristics:	AA 1-295
Origin:	Human
Source:	Wheat germ
Protein Type:	Recombinant
Purification tag / Conjugate:	This RPSAP58 protein is labelled with GST tag.
Application:	Affinity Purification (AP), Antibody Array (AA), ELISA, Western Blotting (WB)

Product Details

Purpose:	LOC388524 (Human) Recombinant Protein (P01)
Sequence:	MSGALDVLQM KEEDVLKFLA AGTHLGGTNL DFQMEQYIYK RKSDGIYIIN LKRTWEKLLL AARAIVAIEN PADVSVISSR NTGQRAVLKF AAATGATPIA GRFTP GTFTN QIQAAFWEPR LLVVTDP RAD HQPLTEASYV NLPTIALCNT DSPLRYVDIA IPCNNKGAHS VGLMWWMLAR EVL RMRGTIS REHPWEVMPD LYFYRDPEEI EKEEQAAA EK AVTKKEEFQGE WTAPAPEFTA TQPEVADWSE GVQVPSVPIQ QFPTEDWSAQ PAMEDWSAAP TAQATEWVGA TTDWS
Characteristics:	Human LOC388524 full-length ORF (NP_001005472.1, 1 a.a. - 295 a.a.) recombinant protein with GST-tag at N-terminal.
Purification:	in vitro wheat germ expression system

Target Details

Target:	RPSAP58
Abstract:	RPSAP58 Products
Background:	Full Gene Name: ribosomal protein SA pseudogene Synonyms:
Gene ID:	388524
NCBI Accession:	NM_001005472

Application Details

Application Notes:	Optimal working dilution should be determined by the investigator.
Comment:	Preparation method: in vitro, wheat germ expression system Product Quality tested by: 12.5% SDS-PAGE Stained with Coomassie Blue.
Restrictions:	For Research Use only

Handling

Buffer:	50 mM Tris-HCl, 10 mM reduced Glutathione, pH =8.0 in the elution buffer.
Handling Advice:	Aliquot to avoid repeated freezing and thawing.
Storage:	-80 °C
Storage Comment:	Best use within three months from the date of receipt of this protein.

Images

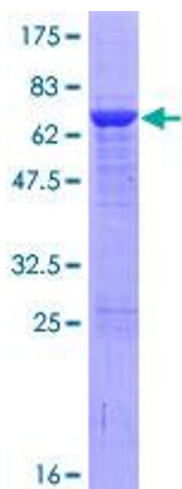


Image 1.