

Datasheet for ABIN1309603  
**TAF11L4 Protein (AA 1-198) (GST tag)**



[Go to Product page](#)

1 Image

Overview

Quantity:	10 µg
Target:	TAF11L4
Protein Characteristics:	AA 1-198
Origin:	Human
Source:	Wheat germ
Protein Type:	Recombinant
Purification tag / Conjugate:	This TAF11L4 protein is labelled with GST tag.
Application:	Affinity Purification (AP), Antibody Array (AA), ELISA, Western Blotting (WB)

Product Details

Purpose:	LOC391746 (Human) Recombinant Protein (P01)
Sequence:	METGRQTGVS AEMLAMPRGL KGSKKDGIPE DLDGNLEAPR DQEGELRSED VMDLTEGDSE ASASAPPAK RRKTHTKGKK ESKPTVDAEE AQRMTTLSS MSEEQLSRYE VCRRSAFPRA RVAGLMRAIT GSSVSENAAI AMAGIAKLFV GEVVEEALDV CEMWGETPPL QPKHLREAVR RLKPKGLFPN SNCKRIMF
Characteristics:	Human LOC391746 full-length ORF ( XP_373058.2, 1 a.a. - 198 a.a.) recombinant protein with GST-tag at N-terminal.
Purification:	in vitro wheat germ expression system

Target Details

Target:	TAF11L4
---------	---------

## Target Details

Alternative Name:	LOC391746 ( <a href="#">TAF11L4 Products</a> )
Background:	Full Gene Name: similar to hCG1809904 Synonyms:
Gene ID:	391746
NCBI Accession:	<a href="#">XM_373058</a>

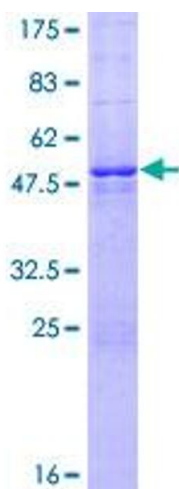
## Application Details

Application Notes:	Optimal working dilution should be determined by the investigator.
Comment:	Preparation method: in vitro, wheat germ expression system Product Quality tested by: 12.5% SDS-PAGE Stained with Coomassie Blue.
Restrictions:	For Research Use only

## Handling

Buffer:	50 mM Tris-HCl, 10 mM reduced Glutathione, pH =8.0 in the elution buffer.
Handling Advice:	Aliquot to avoid repeated freezing and thawing.
Storage:	-80 °C
Storage Comment:	Best use within three months from the date of receipt of this protein.

## Images



**Image 1.**