



[Go to Product page](#)

Datasheet for ABIN1309622

GOLGA6L9 Protein (AA 1-274) (GST tag)

1 Image

Overview

Quantity:	10 µg
Target:	GOLGA6L9
Protein Characteristics:	AA 1-274
Origin:	Human
Source:	Wheat germ
Protein Type:	Recombinant
Purification tag / Conjugate:	This GOLGA6L9 protein is labelled with GST tag.
Application:	ELISA, Western Blotting (WB), Affinity Purification (AP), Antibody Array (AA)

Product Details

Purpose:	LOC440295 (Human) Recombinant Protein (P01)
Sequence:	MEQLQDETNIH LRKELESVGR QLQAEVENNQ MLSLLNRRQE ERLREQEERL REQEERLCEQ EERLCEQEER LREQEERLCE QEKLPQERL LEEVEKLLEQ ERRQEEQERL LERERLLDEV EELLEQERLR QQDERLWQQE TLRELERLRE LERMLELGWE ALYEQRAEPR SGFEELNNEN KSTLQLEQQV KELEKSGGAE EPRGSESAAA ARPVAGAPVP QGAWMCGQAG WTPQEHPGLS GEAVGTGEAA GGAGEAACHS FRAAENRELN ITII
Characteristics:	Human LOC440295 full-length ORF (AAH41854.1, 1 a.a. - 274 a.a.) recombinant protein with GST-tag at N-terminal.
Purification:	in vitro wheat germ expression system

Target Details

Target:	GOLGA6L9
Abstract:	GOLGA6L9 Products
Background:	Full Gene Name: hypothetical protein LOC440295 Synonyms:
Gene ID:	440295

Application Details

Application Notes:	Optimal working dilution should be determined by the investigator.
Comment:	Preparation method: in vitro, wheat germ expression system Product Quality tested by: 12.5% SDS-PAGE Stained with Coomassie Blue.
Restrictions:	For Research Use only

Handling

Buffer:	50 mM Tris-HCl, 10 mM reduced Glutathione, pH =8.0 in the elution buffer.
Handling Advice:	Aliquot to avoid repeated freezing and thawing.
Storage:	-80 °C
Storage Comment:	Best use within three months from the date of receipt of this protein.

Images

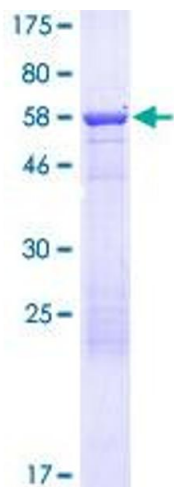


Image 1.