



[Go to Product page](#)

Datasheet for ABIN1309632

## LOC541473 Protein (AA 1-131) (GST tag)

### 1 Image

#### Overview

Quantity:	10 µg
Target:	LOC541473
Protein Characteristics:	AA 1-131
Origin:	Human
Source:	Wheat germ
Protein Type:	Recombinant
Purification tag / Conjugate:	This LOC541473 protein is labelled with GST tag.
Application:	Affinity Purification (AP), Antibody Array (AA), ELISA, Western Blotting (WB)

#### Product Details

Purpose:	FKBP6 (Human) Recombinant Protein (P01)
Sequence:	MGGSALNQGVLGDDAPGQS LYERLSQRML DISGDRGVLK DVIREGAGDL VAPDASVLVK YYGYLEHLDR PFDSNYFRKT PRLMKLGEDI TLWGMELGLL SMQRGELARC FVLGKLLDSQ GPSLHLYLRA S
Characteristics:	Human FKBP6 full-length ORF ( NP_001013770.1, 1 a.a. - 131 a.a.) recombinant protein with GST-tag at N-terminal.
Purification:	in vitro wheat germ expression system

#### Target Details

Target:	LOC541473
Alternative Name:	LOC541473 ( <a href="#">LOC541473 Products</a> )

## Target Details

Background:	Full Gene Name: FK506 binding protein 6, 36 kDa pseudogene Synonyms: MGC88170
Gene ID:	541473
NCBI Accession:	<a href="#">NM_001013748</a>

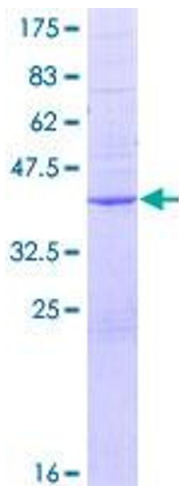
## Application Details

Application Notes:	Optimal working dilution should be determined by the investigator.
Comment:	Preparation method: in vitro, wheat germ expression system Product Quality tested by: 12.5% SDS-PAGE Stained with Coomassie Blue.
Restrictions:	For Research Use only

## Handling

Buffer:	50 mM Tris-HCl, 10 mM reduced Glutathione, pH =8.0 in the elution buffer.
Handling Advice:	Aliquot to avoid repeated freezing and thawing.
Storage:	-80 °C
Storage Comment:	Best use within three months from the date of receipt of this protein.

## Images



**Image 1.**