



[Go to Product page](#)

Datasheet for ABIN1309645

GATSL3 Protein (AA 1-329) (GST tag)

1 Image

Overview

Quantity:	10 µg
Target:	GATSL3
Protein Characteristics:	AA 1-329
Origin:	Human
Source:	Wheat germ
Protein Type:	Recombinant
Purification tag / Conjugate:	This GATSL3 protein is labelled with GST tag.
Application:	ELISA, Western Blotting (WB), Affinity Purification (AP), Antibody Array (AA)

Product Details

Purpose:	LOC652968 (Human) Recombinant Protein (P01)
Sequence:	MELHILEHRV RVLSVARPGL WLYTHPLIKL LFLPRRSRCK FFSLTETPED YTLMVDEEGF KELPPSEFLQ VAEATWLVLN VSSHSGAAVQ AAGVTKIARS VIAPLAEHHV SVLMLSTYQT DFILVREQDL SVVIHTLAQE FDIYREVGGE PVPVTRDDSS NGFPRTQHGP SPTVHPIQSP QNRFCVLTLD PETLPAIATT LIDVLFYSHS TPKEAASSSP EPSSITFFAF SLIEGYISIV MDAETQKKFP SDLLLTSSSG ELWRMVRIGG QPLGFDECGI VAQIAGPLAA ADISAYYIST FNFDHALVPE DGIGSVIEVL QRRQEGLAS
Characteristics:	Human LOC652968 full-length ORF (CAK54431.1, 1 a.a. - 329 a.a.) recombinant protein with GST-tag at N-terminal.
Purification:	in vitro wheat germ expression system

Target Details

Target:	GATSL3
Abstract:	GATSL3 Products
Background:	Full Gene Name: hypothetical protein LOC652968 Synonyms:
Gene ID:	652968

Application Details

Application Notes:	Optimal working dilution should be determined by the investigator.
Comment:	Preparation method: in vitro, wheat germ expression system Product Quality tested by: 12.5% SDS-PAGE Stained with Coomassie Blue.
Restrictions:	For Research Use only

Handling

Buffer:	50 mM Tris-HCl, 10 mM reduced Glutathione, pH =8.0 in the elution buffer.
Handling Advice:	Aliquot to avoid repeated freezing and thawing.
Storage:	-80 °C
Storage Comment:	Best use within three months from the date of receipt of this protein.

Images

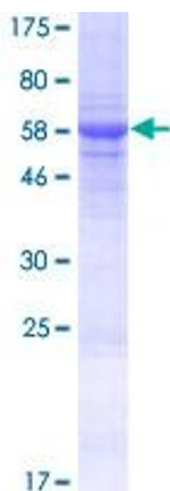


Image 1.