



[Go to Product page](#)

Datasheet for ABIN1309656
ZGRF1 Protein (AA 1-926) (GST tag)

1 Image

Overview

Quantity:	25 µg
Target:	ZGRF1
Protein Characteristics:	AA 1-926
Origin:	Human
Source:	Wheat germ
Protein Type:	Recombinant
Purification tag / Conjugate:	This ZGRF1 protein is labelled with GST tag.
Application:	Affinity Purification (AP), Antibody Array (AA), ELISA, Western Blotting (WB)

Product Details

Purpose:	LOC91431 (Human) Recombinant Protein (P01)
Sequence:	MHFRDTSERQ SDAVNESSLD SVHLQMIKGM LYQQRQDFSS QDSVSRKKVL SLNLKQTSKT EEIKNVLGGS TCYNYSVKDL QEISGSELCF PSGQKIKSAY LPQRQIHIPA VFQSPAHYKQ TFTSCLIEHL NILLFGLAQN LQKALSKVDI SFYTSKLGKEK LKNAENNVPS CHHSQPAKLV MVKKEGPNKG RLFYTCDGPK ADRCKFFKWL EDVTPGYSTQ EGARPGMVLS DIKSIGLYLR SQKIPLYEEC QLLVRKGFDF QRKQYGKLLK FTTVNPEFYN EPKTKLYLKL SRKERSSAYS KNDLWVSKT LDFELDTFIA CSAFFGPSSI NEIEILPLKG YFPSNWPTNM VVHALLVCNA STELTTLKNI QDYFNPATLP LTQYLLTTSS PTIVSNKRVS KRKFIPPAFT NVSTKFELLS LGATLKLASE LIQVHKLNDK QATALIQIAQ MMASHESIEE VKELQHTTFP ITIIHGVFGA GKSYLLAVVI LFFVQLFEKS EAPTIGNARP WKLLISSSTN VAVDRVLLGL LSLGFENFIR VGSVRKIAKP ILPYSLHAGS ENESEQLKEL HALMKEDLTP TERVVYRKS I EQHKLGTNRT LLKQVRVGV TCAACPFCM NDLKFPVVVL DECSQITEPA SLLPIARFEC EKLILVGDPK

Product Details

QLPPTIQGSD AAHENGLEQT LFDRLCLMGH KPILLRTQYR CHPAISAIAI DLFYKGALMN
GVTEIERSPL LEWLPTLCFY NVKGLEQUIER DNSFHNVAEA TFTLKLQSL IASGIAGSMI
GVITLYKSQM YKLCHLLSAV DFHHPDIKT VQSTVDAFQG AEKEIILSC VRTRQVGFID
SEKRMNVALT RGKRHLLIVG NLA CLRKNQL WGRVIQHCEG REDGLQHANQ YEPQLNHLLK
DYFEKQVEEK QKKKSEKEKS KDKSHS

Characteristics: Human LOC91431 full-length ORF (NP_619643.2, 1 a.a. - 926 a.a.) recombinant protein with GST-tag at N-terminal.

Purification: in vitro wheat germ expression system

Target Details

Target: ZGRF1

Abstract: [ZGRF1 Products](#)

Background: Full Gene Name: prematurely terminated mRNA decay factor-like
Synonyms:

Gene ID: 91431

NCBI Accession: [NM_138698](#)

Application Details

Application Notes: Optimal working dilution should be determined by the investigator.

Comment: Preparation method: in vitro, wheat germ expression system
Product Quality tested by: 12.5% SDS-PAGE Stained with Coomassie Blue.

Restrictions: For Research Use only

Handling

Buffer: 50 mM Tris-HCl, 10 mM reduced Glutathione, pH =8.0 in the elution buffer.

Handling Advice: Aliquot to avoid repeated freezing and thawing.

Storage: -80 °C

Storage Comment: Best use within three months from the date of receipt of this protein.

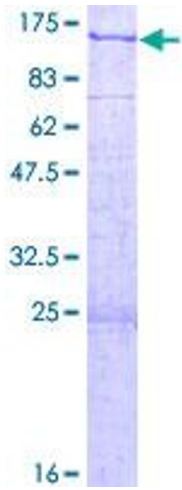


Image 1.