

Datasheet for ABIN1309665
LONRF2 Protein (AA 1-511) (GST tag)



[Go to Product page](#)

1 Image

Overview

Quantity:	10 µg
Target:	LONRF2
Protein Characteristics:	AA 1-511
Origin:	Human
Source:	Wheat germ
Protein Type:	Recombinant
Purification tag / Conjugate:	This LONRF2 protein is labelled with GST tag.
Application:	ELISA, Western Blotting (WB), Affinity Purification (AP), Antibody Array (AA)

Product Details

Purpose:	LONRF2 (Human) Recombinant Protein (P01)
Sequence:	MKNYEALQD ASAACQNEPL LIKGHVKAQ ALSGLGRSKE VLKEFLYCLA LNPECNSVKK EAQKVMCEVL FSATANVHEN LTSSIQSRLK AQGHSHMNAQ ALLEEGDAGS SENSSEKSDM LGNTNSSVLY FILGLHFEED KKALESILPT APSAGLKRQF PDDVEDAPDL NAPGKIPKDD LSPQRSPNSE TEESQGLSLD VTD FECALCM RLLFEPVTTT CGHTFCLKCL ERCLDHAPHC PLCKDKLSEL LASRNFNITV LAEELIFRYL PDELSDRKRI YDEEMSELSN LTRDVPIFVC AMAFPTVPCP LHVFEPRYRL MIRRCMETGT KRFGMCLSAE HAGLSEYGCM LEIKDVRTFP DGSSVDAIG ISRFRVLSHR HRDGYNTADI EYLEDEKVEG PEYEELAALH DSVHQQSVSW FASLQDRMKE QILSHFGVMP DREPEPQSNP SGPAWSWWIL AVLPLERKAQ LAILGMTSLK ERLLAIRRIL VIITRKMNSR QELANARERN N
Characteristics:	Human LONRF2 full-length ORF (AAI01665.1, 1 a.a. - 511 a.a.) recombinant protein with GST-tag at N-terminal.

Product Details

Purification: in vitro wheat germ expression system

Target Details

Target: LONRF2

Alternative Name: LONRF2 ([LONRF2 Products](#))

Background: Full Gene Name: LON peptidase N-terminal domain and ring finger 2
Synonyms: FLJ45273,MGC126711,MGC126713,RNF192

Gene ID: 164832

Application Details

Application Notes: Optimal working dilution should be determined by the investigator.

Comment: Preparation method: in vitro, wheat germ expression system
Product Quality tested by: 12.5% SDS-PAGE Stained with Coomassie Blue.

Restrictions: For Research Use only

Handling

Buffer: 50 mM Tris-HCl, 10 mM reduced Glutathione, pH =8.0 in the elution buffer.

Handling Advice: Aliquot to avoid repeated freezing and thawing.

Storage: -80 °C

Storage Comment: Best use within three months from the date of receipt of this protein.

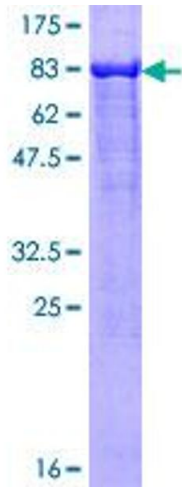


Image 1.