

Datasheet for ABIN1309667

## LONRF2 Protein (AA 1-108) (GST tag)



[Go to Product page](#)

### 1 Image

#### Overview

Quantity:	10 µg
Target:	LONRF2
Protein Characteristics:	AA 1-108
Origin:	Human
Source:	Wheat germ
Protein Type:	Recombinant
Purification tag / Conjugate:	This LONRF2 protein is labelled with GST tag.
Application:	ELISA, Western Blotting (WB), Affinity Purification (AP), Antibody Array (AA)

#### Product Details

Purpose:	FLJ45273 (Human) Recombinant Protein (Q01)
Sequence:	MKNYEALQD ASAACQNEPL LIKGHQVKAQ ALSGLGRSKE VLKEFLYCLA LNPECNSVKK EAQKVMCEVL FSATANVHEN LTSSIQSRLK AQGHSHMNAQ ALLEEGDA
Characteristics:	Human FLJ45273 partial ORF ( NP_940863, 1 a.a. - 108 a.a.) recombinant protein with GST-tag at N-terminal.
Purification:	in vitro wheat germ expression system

#### Target Details

Target:	LONRF2
Alternative Name:	LONRF2 ( <a href="#">LONRF2 Products</a> )

## Target Details

Background:	Full Gene Name: LON peptidase N-terminal domain and ring finger 2 Synonyms: FLJ45273,MGC126711,MGC126713,RNF192
Gene ID:	164832
NCBI Accession:	<a href="#">NM_198461</a>

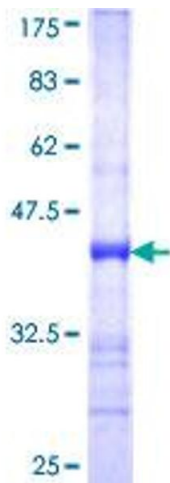
## Application Details

Application Notes:	Optimal working dilution should be determined by the investigator.
Comment:	Preparation method: in vitro, wheat germ expression system Product Quality tested by: 12.5% SDS-PAGE Stained with Coomassie Blue.
Restrictions:	For Research Use only

## Handling

Buffer:	50 mM Tris-HCl, 10 mM reduced Glutathione, pH =8.0 in the elution buffer.
Handling Advice:	Aliquot to avoid repeated freezing and thawing.
Storage:	-80 °C
Storage Comment:	Best use within three months from the date of receipt of this protein.

## Images



**Image 1.**