

Datasheet for ABIN1309671

LOR Protein (AA 1-316) (GST tag)



[Go to Product page](#)

Overview

Quantity:	10 µg
Target:	LOR
Protein Characteristics:	AA 1-316
Origin:	Human
Source:	Wheat germ
Protein Type:	Recombinant
Purification tag / Conjugate:	This LOR protein is labelled with GST tag.
Application:	Western Blotting (WB), ELISA, Affinity Purification (AP), Antibody Array (AA)

Product Details

Purpose:	LOR (Human) Recombinant Protein (P01)
Sequence:	MSYQKKQPTP QPPVDCVKTS GGGGGGGGGG GGGCGFFGGG GSGGGSSGSG CGYSGGGGYS GGGCGGGSSG GGGGGGIGGC GGGSGGSVKY SGGGGSSGGG SGCFFSSGGGG SGCFFSSGGGG SSGGGSGCFS SGGGGSSGGG SGCFFSSGGGG FSGQAVQCQS YGGVSSGGSS GGGSGCFSSG GGGGSVCGYS GGGSGGGSGC GGGSSGGSGS GYVSSQQVTQ TSCAPQPSYG GGSSGGGGSSG GSGCFSSGGG GGSSGCGGGS SGIGSGCIIS GGGSVCGGGS SGGGGGGSSV GGSGSGKGVP ICHQTQQKQA PTWPSK
Characteristics:	Human LOR full-length ORF (AAH34690.1, 1 a.a. - 316 a.a.) recombinant protein with GST-tag at N-terminal.
Purification:	in vitro wheat germ expression system

Target Details

Target:	LOR
Alternative Name:	LOR (LOR Products)
Background:	Full Gene Name: loricrin Synonyms: MGC111513
Gene ID:	4014

Application Details

Application Notes:	Optimal working dilution should be determined by the investigator.
Comment:	Preparation method: in vitro, wheat germ expression system Product Quality tested by: 12.5% SDS-PAGE Stained with Coomassie Blue.
Restrictions:	For Research Use only

Handling

Buffer:	50 mM Tris-HCl, 10 mM reduced Glutathione, pH =8.0 in the elution buffer.
Handling Advice:	Aliquot to avoid repeated freezing and thawing.
Storage:	-80 °C
Storage Comment:	Best use within three months from the date of receipt of this protein.

Images

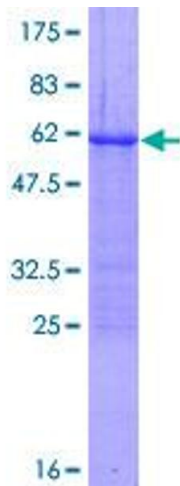


Image 1.