



[Go to Product page](#)

Datasheet for ABIN1309681

LPAR1 Protein (AA 1-364) (GST tag)

1 Image

Overview

Quantity:	25 µg
Target:	LPAR1
Protein Characteristics:	AA 1-364
Origin:	Human
Source:	Wheat germ
Protein Type:	Recombinant
Purification tag / Conjugate:	This LPAR1 protein is labelled with GST tag.
Application:	Western Blotting (WB), ELISA, Affinity Purification (AP), Antibody Array (AA)

Product Details

Purpose:	LPAR1 (Human) Recombinant Protein (P01)
Sequence:	MAAISTSIPV ISQPQFTAMN EPQCFYNESI AFFYNRSGKH LATEWNTVSK LVMGLGITVC IFIMLANLLV MVAIYVNRFF HFPIYYLMAN LAAADFFAGL AYFYLMFNTG PNTRRLTVST WLLRQGLIDT SLTASVANLL AIAIERHITV FRMQLHTRMS NRRVVVVIVV IWTMAIVMGA IPSVGWNCIC DIENCSNMAP LYSDSYLVFW AIFNLVTFVV MVVLYAHIFG YVRQRTMRMS RHSSGPRRNR DTMMSLLKTV VIVLGAFIIC WTPGLVLLLL DVCCPQCDVL AYEKFFLLLA EFNSAMNP II YSYRDKEMSA TFRQILCCQR SENPTGPTEG SDRSASSLNH TILAGVHSND HSVV
Characteristics:	Human LPAR1 full-length ORF (NP_001392.2, 1 a.a. - 364 a.a.) recombinant protein with GST-tag at N-terminal.
Purification:	in vitro wheat germ expression system

Target Details

Target:	LPAR1
Alternative Name:	LPAR1 (LPAR1 Products)
Background:	Full Gene Name: lysophosphatidic acid receptor 1 Synonyms: EDG2,GPR26,Gpcr26,LPA1,Mrec1.3,VZG1,edg-2,rec.1.3,vzg-1
Gene ID:	1902
NCBI Accession:	NM_001401
Pathways:	Myometrial Relaxation and Contraction , Smooth Muscle Cell Migration

Application Details

Application Notes:	Optimal working dilution should be determined by the investigator.
Comment:	Preparation method: in vitro, wheat germ expression system Product Quality tested by: 12.5% SDS-PAGE Stained with Coomassie Blue.
Restrictions:	For Research Use only

Handling

Buffer:	50 mM Tris-HCl, 10 mM reduced Glutathione, pH =8.0 in the elution buffer.
Handling Advice:	Aliquot to avoid repeated freezing and thawing.
Storage:	-80 °C
Storage Comment:	Best use within three months from the date of receipt of this protein.

Images

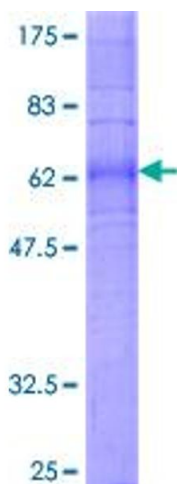


Image 1.