



[Go to Product page](#)

Datasheet for ABIN1309682

## LPAR1 Protein (AA 1-125) (GST tag)

### 1 Image

#### Overview

Quantity:	10 µg
Target:	LPAR1
Protein Characteristics:	AA 1-125
Origin:	Human
Source:	Wheat germ
Protein Type:	Recombinant
Purification tag / Conjugate:	This LPAR1 protein is labelled with GST tag.
Application:	Western Blotting (WB), ELISA, Affinity Purification (AP), Antibody Array (AA)

#### Product Details

Purpose:	LPAR1 (Human) Recombinant Protein (Q01)
Sequence:	MAAISTSIPV ISQPQFTAMN EPQCFYNESI AFFYNRSGKH LATEWNTVSK LVMGLGITVC IFIMLANLLV MVAIYVNRFF HFPIYYLMAN LAAADFFAGL AYFYLMFNTG PNTRRLTVST WLLRQ
Characteristics:	Human LPAR1 partial ORF ( AAH30615, 1 a.a. - 125 a.a.) recombinant protein with GST-tag at N-terminal.
Purification:	in vitro wheat germ expression system

#### Target Details

Target:	LPAR1
Alternative Name:	LPAR1 ( <a href="#">LPAR1 Products</a> )

## Target Details

Background:	Full Gene Name: lysophosphatidic acid receptor 1 Synonyms: EDG2,GPR26,Gpcr26,LPA1,Mrec1.3,VZG1,edg-2,rec.1.3,vzg-1
Gene ID:	1902
Pathways:	<a href="#">Myometrial Relaxation and Contraction</a> , <a href="#">Smooth Muscle Cell Migration</a>

## Application Details

Application Notes:	Optimal working dilution should be determined by the investigator.
Comment:	Preparation method: in vitro, wheat germ expression system Product Quality tested by: 12.5% SDS-PAGE Stained with Coomassie Blue.
Restrictions:	For Research Use only

## Handling

Buffer:	50 mM Tris-HCl, 10 mM reduced Glutathione, pH =8.0 in the elution buffer.
Handling Advice:	Aliquot to avoid repeated freezing and thawing.
Storage:	-80 °C
Storage Comment:	Best use within three months from the date of receipt of this protein.

## Images

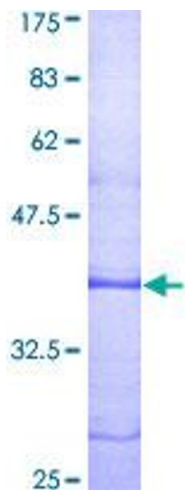


Image 1.