



[Go to Product page](#)

Datasheet for ABIN1309684

EDG4 Protein (AA 1-351) (GST tag)

1 Image

Overview

Quantity:	10 µg
Target:	EDG4 (LPAR2)
Protein Characteristics:	AA 1-351
Origin:	Human
Source:	Wheat germ
Protein Type:	Recombinant
Purification tag / Conjugate:	This EDG4 protein is labelled with GST tag.
Application:	Western Blotting (WB), ELISA, Affinity Purification (AP), Antibody Array (AA)

Product Details

Purpose:	EDG4 (Human) Recombinant Protein (P01)
Sequence:	MVIMGQCYYN ETIGFFYNNS GKELSSHWRP KDVVVALGL TVSVLVLLTN LLVIAAIASN RRFHQPIYYL LGNLAADLF AGVAYLFLMF HTGPRTARLS LEGWFLRQGL LDTSLTASVA TLLAIAVERH RSVMAVQLHS RLPRGRVVML IVGVVVAALG LGLLPAHSWH CLCALDRCSR MAPLLSRSYL AVWALSSLLV FLLMVAVYTR IFSYVRRRVQ RMAEHVSCHP RYRETTLSLV KTVVILGAF VVCWTPGQVV LLLDGLGCES CNVLAVEKYF LLLAEANSLV NAAVYSCRDA EMRRTFRRL CCACLRQSTR ESVHYTSSAQ GGASTRIMLP ENGHPRMDST L
Characteristics:	Human EDG4 full-length ORF (AAH25695, 1 a.a. - 351 a.a.) recombinant protein with GST-tag at N-terminal.
Purification:	in vitro wheat germ expression system

Target Details

Target:	EDG4 (LPAR2)
Alternative Name:	LPAR2 (LPAR2 Products)
Background:	Full Gene Name: lysophosphatidic acid receptor 2 Synonyms: EDG-4,EDG4,FLJ93869,LPA2
Gene ID:	9170

Application Details

Application Notes:	Optimal working dilution should be determined by the investigator.
Comment:	Preparation method: in vitro, wheat germ expression system Product Quality tested by: 12.5% SDS-PAGE Stained with Coomassie Blue.
Restrictions:	For Research Use only

Handling

Buffer:	50 mM Tris-HCl, 10 mM reduced Glutathione, pH =8.0 in the elution buffer.
Handling Advice:	Aliquot to avoid repeated freezing and thawing.
Storage:	-80 °C
Storage Comment:	Best use within three months from the date of receipt of this protein.

Images

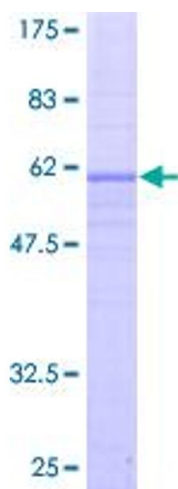


Image 1.