



[Go to Product page](#)

Datasheet for ABIN1309688

LPAR3 Protein (AA 1-353) (GST tag)

1 Image

Overview

Quantity:	25 µg
Target:	LPAR3
Protein Characteristics:	AA 1-353
Origin:	Human
Source:	Wheat germ
Protein Type:	Recombinant
Purification tag / Conjugate:	This LPAR3 protein is labelled with GST tag.
Application:	Western Blotting (WB), ELISA, Affinity Purification (AP), Antibody Array (AA)

Product Details

Purpose:	EDG7 (Human) Recombinant Protein (P01)
Sequence:	MNECHYDKHM DFFYNRSNTD TVDDWTGTKL VIVLCVGTFF CLFIFFSNSL VIAAVIKNRK FHFPFYLLA NLAAADFFAG IAYVFLMFNT GPVSKTLTVN RWFLRQGLLD SSLTASLTNL LVIAVERHMS IMRMRVHSNL TKKRVTLLIL LVWAI AIFMG AVPTLGWNCL CNISACSSLA PIYSRSYLVF WTVSNLMAFL IMVVVYLRIY VYVKRKTNVL SPHTSGSISR RRTPMKLMKT VMTVLGAFVW CWTPGLVLL LDGLNCRQCG VQHVKRWFL LALLNSVNP IISYKDEDM YGTMKKMICC FSQENPERRP SRIPSTVLSR SDTGSQYIED SISQGAVCNK STS
Characteristics:	Human EDG7 full-length ORF (NP_036284.1, 1 a.a. - 353 a.a.) recombinant protein with GST-tag at N-terminal.
Purification:	in vitro wheat germ expression system

Target Details

Target: LPAR3

Alternative Name: LPAR3 ([LPAR3 Products](#))

Background: Full Gene Name: lysophosphatidic acid receptor 3
Synonyms: EDG7,Edg-7,FLJ98231,GPCR,HOFNH30,LP-A3,LPA3,RP4-678I3

Gene ID: 23566

NCBI Accession: [NM_012152](#)

Pathways: [Regulation of Cell Size](#)

Application Details

Application Notes: Optimal working dilution should be determined by the investigator.

Comment: Preparation method: in vitro, wheat germ expression system
Product Quality tested by: 12.5% SDS-PAGE Stained with Coomassie Blue.

Restrictions: For Research Use only

Handling

Buffer: 50 mM Tris-HCl, 10 mM reduced Glutathione, pH =8.0 in the elution buffer.

Handling Advice: Aliquot to avoid repeated freezing and thawing.

Storage: -80 °C

Storage Comment: Best use within three months from the date of receipt of this protein.

Images

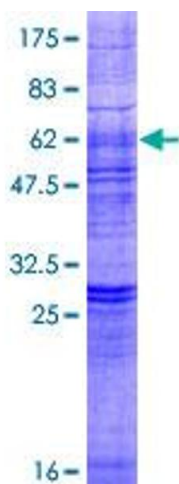


Image 1.