



[Go to Product page](#)

Datasheet for ABIN1309695

LPCAT4 Protein (AA 1-524) (GST tag)

1 Image

Overview

Quantity:	10 µg
Target:	LPCAT4
Protein Characteristics:	AA 1-524
Origin:	Human
Source:	Wheat germ
Protein Type:	Recombinant
Purification tag / Conjugate:	This LPCAT4 protein is labelled with GST tag.
Application:	Western Blotting (WB), ELISA, Affinity Purification (AP), Antibody Array (AA)

Product Details

Purpose:	AGPAT7 (Human) Recombinant Protein (P01)
Sequence:	MSQGS PGDWA PLDPTPGPPA SPNPFVHELH LSRLQVRKFC LLGALLAPIR VLLAFIVLFL LWPFQWLQVA GLSEEQLQEP ITGWRKTVCH NGVLGLSRL L FLLGFLRIR VRGQRASRLQ APVLAAPHSTFFDPIVLLP CDLPKVVSR ENLSVPVIGA LLRFNQAILV SRHDPASRRR VVEEVRRRAT SGGKWPQVLF FPEGTC SNKK ALLKFKPGAF IAGVPVQPV L IRYPNSLD TT SWAWRGPV L KVLWLTASQP CSIVDVEFLP VYHPSPEESR DPTLYANNVQ RVMAQALGIP ATECEFGVSL PVIVVGR LKV ALEPQLWELG KVLKAGLSA GYVDAGAEPG RSRMISQEEF ARQLQLSDPQ TVAGAFGYFQ QDTKGLVDFR DVALALAALD GGRSLEELTR LAFELFAEEQ AEGPNRLLYK DGFSTILHLL LGSPHPAATA LHAELCQAGS SQGLSLCQFQ NFSLHDPLYG KLFSTYLRPP HTSRGTSTP NASSPGNPTA LANGTVQAPK QKGD
Characteristics:	Human AGPAT7 full-length ORF (NP_705841.2, 1 a.a. - 524 a.a.) recombinant protein with GST-tag at N-terminal.

Product Details

Purification: in vitro wheat germ expression system

Target Details

Target: LPCAT4

Alternative Name: LPCAT4 ([LPCAT4 Products](#))

Background: Full Gene Name: lysophosphatidylcholine acyltransferase 4
Synonyms: AGPAT7,AYTL3,FLJ10257,LPAAT-eta,LPEAT2

Gene ID: 254531

NCBI Accession: [NM_153613](#)

Application Details

Application Notes: Optimal working dilution should be determined by the investigator.

Comment: Preparation method: in vitro, wheat germ expression system
Product Quality tested by: 12.5% SDS-PAGE Stained with Coomassie Blue.

Restrictions: For Research Use only

Handling

Buffer: 50 mM Tris-HCl, 10 mM reduced Glutathione, pH =8.0 in the elution buffer.

Handling Advice: Aliquot to avoid repeated freezing and thawing.

Storage: -80 °C

Storage Comment: Best use within three months from the date of receipt of this protein.

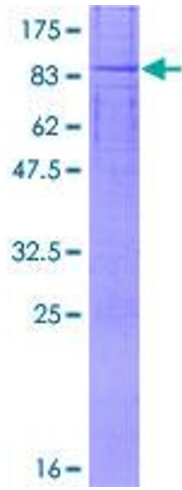


Image 1.