



[Go to Product page](#)

Datasheet for ABIN1309697

LPGAT1 Protein (AA 1-370) (GST tag)

1 Image

Overview

Quantity:	25 µg
Target:	LPGAT1
Protein Characteristics:	AA 1-370
Origin:	Human
Source:	Wheat germ
Protein Type:	Recombinant
Purification tag / Conjugate:	This LPGAT1 protein is labelled with GST tag.
Application:	ELISA, Western Blotting (WB), Affinity Purification (AP), Antibody Array (AA)

Product Details

Purpose:	LPGAT1 (Human) Recombinant Protein (P01)
Sequence:	MAITLEEAPW LGWLLVKALM RFAFMVVNNL VAIPSYICYV IILQPLRVLD SKRFWYIEGI MYKWLLGMVA SWGWYAGYTV MEWGEDIKAV SKDEAVMLVN HQATGDVCTL MMCLQDKGLV VAQMMWLMDH IFKYTNFGIV SLVHGDFIR QGRSYRDQQL LLLKKHLENN YRSRDRKWIV LFPEGGFLRK RRETSQAFK KNNLPFLTNV TLPRSGATKI ILNALVAQQK NGSPAGGDAK ELDSKSKGLQ WIIDTTIAYP KAEPIDIQTW ILGYRKPTVT HVHYRIFPIK DVPLETDDL TWLYQRFVEK EDLLSHFYET GAFPPSKGHK EAVSREMTLS NLWIFLIQSF AFLSGYMWYN IIQYFYHCLF
Characteristics:	Human LPGAT1 full-length ORF (NP_055688.1, 1 a.a. - 370 a.a.) recombinant protein with GST-tag at N-terminal.
Purification:	in vitro wheat germ expression system

Target Details

Target:	LPGAT1
Alternative Name:	LPGAT1 (LPGAT1 Products)
Background:	Full Gene Name: lysophosphatidylglycerol acyltransferase 1 Synonyms: FAM34A,FAM34A1,NET8
Gene ID:	9926
NCBI Accession:	NM_014873

Application Details

Application Notes:	Optimal working dilution should be determined by the investigator.
Comment:	Preparation method: in vitro, wheat germ expression system Product Quality tested by: 12.5% SDS-PAGE Stained with Coomassie Blue.
Restrictions:	For Research Use only

Handling

Buffer:	50 mM Tris-HCl, 10 mM reduced Glutathione, pH =8.0 in the elution buffer.
Handling Advice:	Aliquot to avoid repeated freezing and thawing.
Storage:	-80 °C
Storage Comment:	Best use within three months from the date of receipt of this protein.

Images

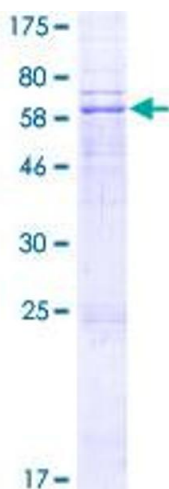


Image 1.