

Datasheet for ABIN1309698

Latrophilin 1 Protein (LPHN1) (AA 1-201) (GST tag)



[Go to Product page](#)

1 Image

Overview

Quantity:	10 µg
Target:	Latrophilin 1 (LPHN1)
Protein Characteristics:	AA 1-201
Origin:	Human
Source:	Wheat germ
Protein Type:	Recombinant
Purification tag / Conjugate:	This Latrophilin 1 protein is labelled with GST tag.
Application:	Western Blotting (WB), ELISA, Affinity Purification (AP), Antibody Array (AA)

Product Details

Purpose:	LPHN1 (Human) Recombinant Protein (P01)
Sequence:	MGLASHLERL MAEGKWGGTG VVEGMGMAEE GAGNGKAVWG MGRGKGERSP SLSSTFPQGR RSQVPGLGSG HPCSGRLDPK SQTPEAPGSG CVLSTCPGPL LSSLGQPPQ PPSLNSRGS APGHSPAPA LPFPQRWPLH LCSDLSPSLC PSFSHKCHEF SNIFGSQPAA AMNFVGLRGR GSRKELGGRG QVGGWRDPFC C
Characteristics:	Human LPHN1 full-length ORF (AAH19928, 1 a.a. - 201 a.a.) recombinant protein with GST-tag at N-terminal.
Purification:	in vitro wheat germ expression system

Target Details

Target:	Latrophilin 1 (LPHN1)
---------	-----------------------

Target Details

Alternative Name:	LPHN1 (LPHN1 Products)
Background:	Full Gene Name: latrophilin 1 Synonyms: C1RL1,CL1,LEC2
Gene ID:	22859
Pathways:	Synaptic Membrane , Synaptic Vesicle Exocytosis

Application Details

Application Notes:	Optimal working dilution should be determined by the investigator.
Comment:	Preparation method: in vitro, wheat germ expression system Product Quality tested by: 12.5% SDS-PAGE Stained with Coomassie Blue.
Restrictions:	For Research Use only

Handling

Buffer:	50 mM Tris-HCl, 10 mM reduced Glutathione, pH =8.0 in the elution buffer.
Handling Advice:	Aliquot to avoid repeated freezing and thawing.
Storage:	-80 °C
Storage Comment:	Best use within three months from the date of receipt of this protein.

Images

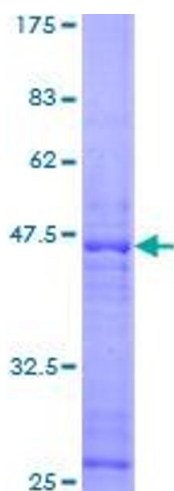


Image 1.