

Datasheet for ABIN1309714
LRCH3 Protein (AA 1-712) (GST tag)



[Go to Product page](#)

1 Image

Overview

Quantity:	10 µg
Target:	LRCH3
Protein Characteristics:	AA 1-712
Origin:	Human
Source:	Wheat germ
Protein Type:	Recombinant
Purification tag / Conjugate:	This LRCH3 protein is labelled with GST tag.
Application:	ELISA, Western Blotting (WB), Affinity Purification (AP), Antibody Array (AA)

Product Details

Purpose:	LRCH3 (Human) Recombinant Protein (P01)
Sequence:	<p>MAAAGLVAVA AAAEYSGTVA SGGNLPGVHC GPSSGAGPGF GPGSWSRSLD RALEEAAVTG</p> <p>VLSLSGRKLR EFPRGAANHD LTDTTRADLS RNRLSEIPIE ACHFVSLLENL NLYQNCIRYI</p> <p>PEAILNLQAL TFLNISRNQL STLPVHLCNL PLKVLIASNN KLVSLPEEIG HLRHLMELDV</p> <p>SCNEIQTIPS QIGNLEALRD LNVRRNHLVH LPEELAEPL IRLDFSCNKI TTIPVCYRNL</p> <p>RHLQTITLDN NPLQSPPAQI CIKGVHIFK YLNIQACKIA PDLPDYDRRP LGFGSCHEEL</p> <p>YSSRPYGALD SGFNSVDSGD KRWSGNEPTD EFSDLPLRVA EITKEQLRR ESQYQENRGS</p> <p>LVVTNGGVEH DLDQIDYIDS CTAEEEEAEV RQPKGPDPS LSSQFMAYIE QRRISHEGSP</p> <p>VKPVAIREFQ KTEDMRRYLH QNRVPAEPSS LLSLSASHNQ LSHTDLELHQ RREQLVERTR</p> <p>REAQLAALQY EEEKIRTKQI QRDAVLDFVK QKASQSPQKQ HPLLDGVDGE CPFPSRRSQH</p> <p>TDDSALCMSL SGLNQVGCAA TLPHSSAFTP LKSDDRPNAL LSSPATETVH HSPAYSFPAA</p> <p>IQRNQPQRPE SFLFRAGVRA ETNKGHASPL PPSAAPTDS TDSITGQNSR QREELELID</p>

Product Details

QLRKHIEYRL KVSLPCDLGA ALTDGVVLCH LANHVRPRSV PSIHVPSPAV VS

Characteristics:	Human LRCH3 full-length ORF (NP_116162.1, 1 a.a. - 712 a.a.) recombinant protein with GST-tag at N-terminal.
Purification:	in vitro wheat germ expression system

Target Details

Target:	LRCH3
Alternative Name:	LRCH3 (LRCH3 Products)
Background:	Full Gene Name: leucine-rich repeats and calponin homology (CH) domain containing 3 Synonyms: FLJ20994,FLJ43245,FLJ44976,MGC4126
Gene ID:	84859
NCBI Accession:	NM_032773

Application Details

Application Notes:	Optimal working dilution should be determined by the investigator.
Comment:	Preparation method: in vitro, wheat germ expression system Product Quality tested by: 12.5% SDS-PAGE Stained with Coomassie Blue.
Restrictions:	For Research Use only

Handling

Buffer:	50 mM Tris-HCl, 10 mM reduced Glutathione, pH =8.0 in the elution buffer.
Handling Advice:	Aliquot to avoid repeated freezing and thawing.
Storage:	-80 °C
Storage Comment:	Best use within three months from the date of receipt of this protein.

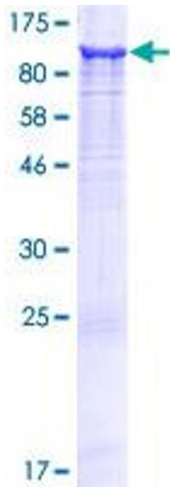


Image 1.